

For Research Use Only

CDC25A Monoclonal antibody

Catalog Number: 68457-1-Ig



Basic Information

Catalog Number:

68457-1-Ig

Size:

1000 µg/ml

Source:

Mouse

Isotype:

IgG1

GenBank Accession Number:

NM_001789

GeneID (NCBI):

993

UNIPROT ID:

P30304

Full Name:

cell division cycle 25 homolog A (S. pombe)

Calculated MW:

59 kDa

Observed MW:

55-60 kDa

Purification Method:

Protein G purification

CloneNo.:

3C3A8

Recommended Dilutions:

WB 1:5000-1:50000

Applications

Tested Applications:

WB, ELISA

Species Specificity:

Human, mouse, rat

Positive Controls:

WB : SK-BR-3 cells, HeLa cells, SW480 cells, MOLT-4 cells, Jurkat cells, HSC-T6 cells, 4T1 cells

Background Information

Storage

Storage:

Store at -20°C. Stable for one year after shipment.

Storage Buffer:

PBS with 0.02% sodium azide and 50% glycerol pH 7.3.

Aliquoting is unnecessary for -20°C storage

For technical support and original validation data for this product please contact:

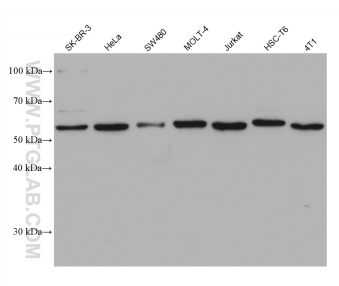
T: 4006900926

E: Proteintech-CN@ptglab.com

W: ptgcn.com

This product is exclusively available under Proteintech Group brand and is not available to purchase from any other manufacturer.

Selected Validation Data



Various lysates were subjected to SDS PAGE followed by western blot with 68457-1-Ig (CDC25A antibody) at dilution of 1:20000 incubated at room temperature for 1.5 hours.