

For Research Use Only

SQRDL Monoclonal antibody, PBS Only

Catalog Number: 68459-1-PBS

Featured Product



Basic Information

Catalog Number:

68459-1-PBS

Size:

1 mg/ml

Source:

Mouse

Isotype:

IgG2b

Immunogen Catalog Number:

AG10762

GenBank Accession Number:

BC016836

GeneID (NCBI):

58472

UNIPROT ID:

Q9Y6N5

Full Name:

sulfide quinone reductase-like (yeast)

Calculated MW:

450 aa, 50 kDa

Observed MW:

50 kDa

Purification Method:

Protein A purification

CloneNo.:

1B4E3

Applications

Tested Applications:

WB, IHC, IF/ICC, IP, Indirect ELISA

Species Specificity:

human, pig

Background Information

SQRDL (Sulfide:quinone oxidoreductase, mitochondrial) catalyzes the oxidation of hydrogen sulfide, with the help of a quinone. Although the SQRDL precursor protein displays a molecular weight of 50 kDa, a prominent band at about 46 kDa is detected by western blot. This discrepancy reflects the cleavage of an N-terminal targeting sequence of 4 kDa during the import of the protein into the mitochondria (PMID:22067608). SQRDL is one of the enzymes involved in H₂S signaling in a discrete population of neurons, oligodendrocytes, and endothelial cells.

Storage

Storage:

Store at -80°C.

The product is shipped with ice packs. Upon receipt, store it immediately at -80°C

Storage Buffer:

PBS Only

For technical support and original validation data for this product please contact:

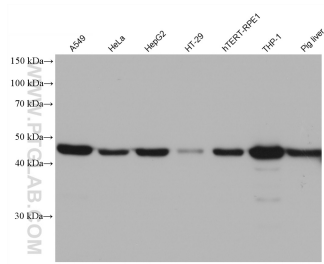
T: 4006900926

E: Proteintech-CN@ptglab.com

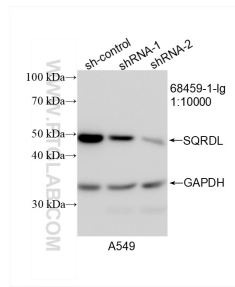
W: ptgcn.com

This product is exclusively available under Proteintech Group brand and is not available to purchase from any other manufacturer.

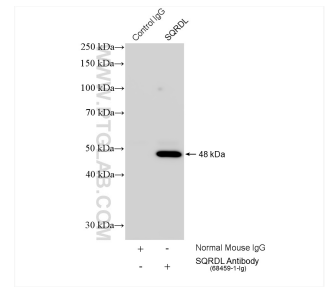
Selected Validation Data



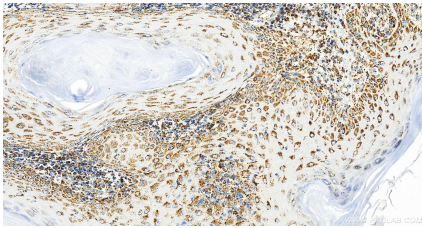
Various lysates were subjected to SDS PAGE followed by western blot with 68459-1-Ig (SQRDL antibody) at dilution of 1:20000 incubated at room temperature for 1.5 hours. This data was developed using the same antibody clone with 68459-1-PBS in a different storage buffer formulation.



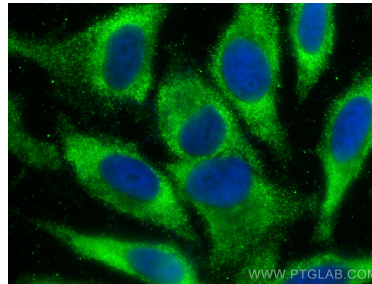
WB result of SQRDL antibody (68459-1-Ig; 1:10000; incubated at room temperature for 1.5 hours) with sh-Control and sh-SQRDL transfected A549 cells. This data was developed using the same antibody clone with 68459-1-PBS in a different storage buffer formulation.



IP result of anti-SQRDL (IP:68459-1-Ig, 4ug; Detection:68459-1-Ig 1:3000) with HeLa cells lysate 1560 ug. This data was developed using the same antibody clone with 68459-1-PBS in a different storage buffer formulation.



Immunohistochemical analysis of paraffin-embedded skin cancer slide using 68459-1-Ig (SQRDL antibody) at dilution of 1:4000 (under 20x lens). Heat mediated antigen retrieval with Tris-EDTA buffer (pH 9.0). This data was developed using the same antibody clone with 68459-1-PBS in a different storage buffer formulation.



Immunofluorescent analysis of (-20°C Ethanol) fixed HepG2 cells using SQRDL antibody (68459-1-Ig, Clone: 1B4E3) at dilution of 1:400 and CoralLite@488-Conjugated AffiniPure Goat Anti-Mouse IgG(H+L) (SA00013-1). This data was developed using the same antibody clone with 68459-1-PBS in a different storage buffer formulation.