

For Research Use Only

SQRDL Monoclonal antibody, PBS Only (Capture)

Catalog Number: 68459-2-PBS



Basic Information

Catalog Number: 68459-2-PBS	GenBank Accession Number: BC016836	Purification Method: Protein G Magarose purification
Size: 1 mg/ml	GeneID (NCBI): 58472	CloneNo.: 1F10B12
Source: Mouse	UNIPROT ID: Q9Y6N5	
Isotype: IgG1	Full Name: sulfide quinone reductase-like (yeast)	
Immunogen Catalog Number: AG10762	Calculated MW: 450 aa, 50 kDa	

Applications

Tested Applications:
Cytometric bead array, Indirect ELISA

Species Specificity:
human

Background Information

Storage

Storage:
Store at -80°C.
The product is shipped with ice packs. Upon receipt, store it immediately at -80°C

Storage Buffer:
PBS Only

For technical support and original validation data for this product please contact:

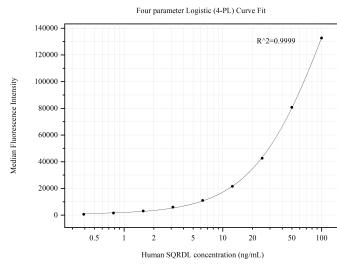
T: 4006900926

E: Proteintech-CN@ptglab.com

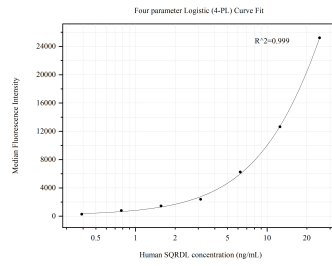
W: ptgcn.com

This product is exclusively available under Proteintech Group brand and is not available to purchase from any other manufacturer.

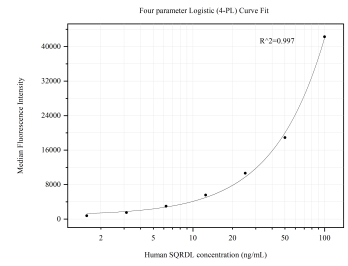
Selected Validation Data



Cytometric bead array standard curve of MP50545-1, SQRDL Monoclonal Matched Antibody Pair, PBS Only. Capture antibody: 68459-2-PBS. Detection antibody: 68459-3-PBS. Standard: Ag10762. Range: 0.391-100 ng/mL



Cytometric bead array standard curve of MP50545-2, SQRDL Monoclonal Matched Antibody Pair, PBS Only. Capture antibody: 68459-2-PBS. Detection antibody: 68459-4-PBS. Standard: Ag10762. Range: 0.391-25 ng/mL



Cytometric bead array standard curve of MP50545-3, SQRDL Monoclonal Matched Antibody Pair, PBS Only. Capture antibody: 68459-2-PBS. Detection antibody: 68459-5-PBS. Standard: Ag10762. Range: 1.563-100 ng/mL