

For Research Use Only

MRPL28 Monoclonal antibody

Catalog Number: 68467-1-Ig



Basic Information

Catalog Number: 68467-1-Ig	GenBank Accession Number: BC000990	Purification Method: Protein G purification
Size: 1000 µg/ml	GeneID (NCBI): 10573	CloneNo.: 2E6B2
Source: Mouse	UNIPROT ID: Q13084	Recommended Dilutions: WB 1:5000-1:50000
Isotype: IgG1	Full Name: mitochondrial ribosomal protein L28	
Immunogen Catalog Number: AG33198	Calculated MW: 30 kDa	
	Observed MW: 30 kDa	

Applications

Tested Applications: WB, ELISA	Positive Controls: WB : U2OS cells, LNCaP cells, HeLa cells, HEK-293 cells, Jurkat cells, K-562 cells, HSC-T6 cells, NIH-3T3 cells, 4T1 cells
Species Specificity: Human, mouse, rat	

Background Information

Storage

Storage:
Store at -20°C. Stable for one year after shipment.
Storage Buffer:
PBS with 0.02% sodium azide and 50% glycerol pH 7.3.
Aliquoting is unnecessary for -20°C storage

For technical support and original validation data for this product please contact:

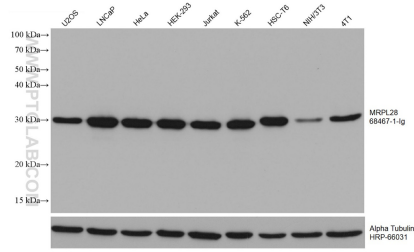
T: 4006900926

E: Proteintech-CN@ptglab.com

W: ptgcn.com

This product is exclusively available under Proteintech Group brand and is not available to purchase from any other manufacturer.

Selected Validation Data



Various lysates were subjected to SDS PAGE followed by western blot with 68467-1-Ig (MRPL28 antibody) at dilution of 1:10000 incubated at room temperature for 1.5 hours. The membrane was stripped and reblotted with HRP-conjugated Alpha Tubulin Monoclonal antibody (HRP-66031) as loading control.