

For Research Use Only

PPA2 Monoclonal antibody, PBS Only



Catalog Number: 68468-1-PBS

Basic Information

Catalog Number: 68468-1-PBS	GenBank Accession Number: BC057219	Purification Method: Protein G purification
Size: 1 mg/ml	GeneID (NCBI): 27068	CloneNo.: 1C2E3
Source: Mouse	UNIPROT ID: Q9H2U2	
Isotype: IgG1	Full Name: pyrophosphatase (inorganic) 2	
Immunogen Catalog Number: AG10125	Calculated MW: 305aa,35 kDa; 334aa,38 kDa	
	Observed MW: 34 kDa	

Applications

Tested Applications:
WB, Indirect ELISA

Species Specificity:
Human, mouse, rat

Background Information

Pyrophosphatase 2 (PPA2) is a mitochondrial-located pyrophosphatase (PPase) that hydrolyzes inorganic pyrophosphate (PPi), generated by numerous nucleotide-dependent reactions, into two orthophosphate molecules (PMID: 34400813). PPA2 is a cardiomyopathy-associated protein, which has a greater physiological importance in mitochondrial function (PMID: 27523597).

Storage

Storage:
Store at -80°C.

Storage Buffer:
PBS Only

For technical support and original validation data for this product please contact:

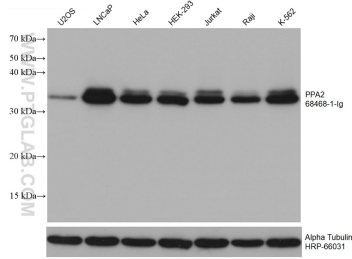
T: 4006900926

E: Proteintech-CN@ptglab.com

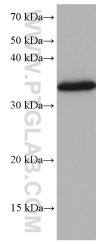
W: ptgcn.com

This product is exclusively available under Proteintech Group brand and is not available to purchase from any other manufacturer.

Selected Validation Data



Various lysates were subjected to SDS PAGE followed by western blot with 68468-1-Ig (PPA2 antibody) at dilution of 1:20000 incubated at room temperature for 1.5 hours. The membrane was stripped and reblotted with HRP-conjugated Alpha Tubulin Monoclonal antibody (HRP-66031) as loading control. This data was developed using the same antibody clone with 68468-1-PBS in a different storage buffer formulation.



4T1 cells were subjected to SDS PAGE followed by western blot with 68468-1-Ig (PPA2 antibody) at dilution of 1:20000 incubated at room temperature for 1.5 hours. This data was developed using the same antibody clone with 68468-1-PBS in a different storage buffer formulation.