

For Research Use Only

Smac/DIABLO Monoclonal antibody, PBS Only (Detector)

Catalog Number: 68480-1-PBS



Basic Information

Catalog Number: 68480-1-PBS	GenBank Accession Number: BC011909	Purification Method: Protein A purification
Size: 1mg/ml	GeneID (NCBI): 56616	CloneNo.: 2F12C9
Source: Mouse	UNIPROT ID: Q9NR28	
Isotype: IgG1	Full Name: diablo homolog (Drosophila)	
Immunogen Catalog Number: AG32774	Calculated MW: 27 kDa	
	Observed MW: 20 kDa	

Applications

Tested Applications:
WB, IF/ICC, Cytometric bead array, Indirect ELISA

Species Specificity:
human, rat

Background Information

Smac/DIABLO is a mitochondrial protein that promotes apoptosis by neutralizing members of the IAP family. SMAC/DIABLO is ubiquitously expressed in normal tissues, and the expression of SMAC messenger RNA (mRNA) in adult testis is the highest. Smac/DIABLO encodes a 239 amino acid protein (~27 kDa). The first 55 amino acids are a mitochondrial targeting signal peptide that is cleaved to generate mature Smac-DIABLO (~21 kDa). When released from mitochondria, Smac-DIABLO acts as a natural antagonist of inhibitor of apoptosis proteins (IAPs). Smac-DIABLO antagonistic activity is based on its N-terminal tetrapeptide (AVPI) that binds baculoviral IAP repeat (BIR) domains of IAPs, releasing their inhibitory effects on both initiator and effector caspases, thus promoting cell death. (PMID: 32325691, PMID: 32575872, PMID: 25650938)

Storage

Storage:
Store at -80°C.
The product is shipped with ice packs. Upon receipt, store it immediately at -80°C

Storage Buffer:
PBS Only

For technical support and original validation data for this product please contact:

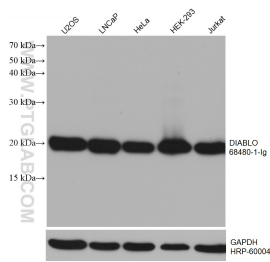
T: 4006900926

E: Proteintech-CN@ptglab.com

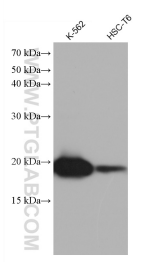
W: ptgcn.com

This product is exclusively available under Proteintech Group brand and is not available to purchase from any other manufacturer.

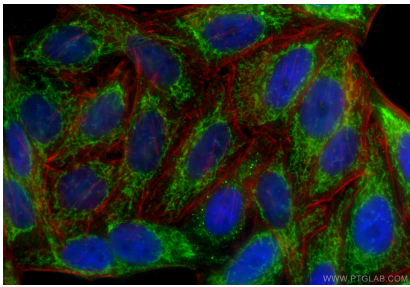
Selected Validation Data



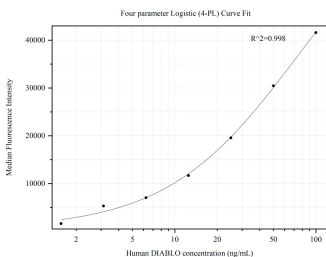
Various lysates were subjected to SDS PAGE followed by western blot with 68480-1-Ig (DIABLO antibody) at dilution of 1:10000 incubated at room temperature for 1.5 hours. The membrane was stripped and reblotted with HRP-conjugated GAPDH Monoclonal antibody (HRP-60004) as loading control. This data was developed using the same antibody clone with 68480-1-PBS in a different storage buffer formulation.



Various lysates were subjected to SDS PAGE followed by western blot with 68480-1-Ig (DIABLO antibody) at dilution of 1:10000 incubated at room temperature for 1.5 hours. This data was developed using the same antibody clone with 68480-1-PBS in a different storage buffer formulation.



Immunofluorescent analysis of (4% PFA) fixed HepG2 cells using Smac/DIABLO antibody (68480-1-Ig, Clone: 2F12C9) at dilution of 1:800 and CoraLite@488-Conjugated Goat Anti-Mouse IgG(H+L) (SA00013-1, CL594-phalloidin (red). This data was developed using the same antibody clone with 68480-1-PBS in a different storage buffer formulation.



Cytometric bead array standard curve of MP50334-2, DIABLO Monoclonal Matched Antibody Pair, PBS Only. Capture antibody: 68480-4-PBS. Detection antibody: 68480-1-PBS. Standard:Ag32774. Range: 1.563-100 ng/mL.