

ABCF2 Monoclonal antibody

Catalog Number: 68490-1-Ig

Basic Information

Catalog Number:

68490-1-Ig

Size:

1000 µg/ml

Source:

Mouse

Isotype:

IgG2a

Immunogen Catalog Number:

AG33824

GenBank Accession Number:

BC001661

GeneID (NCBI):

10061

UNIPROT ID:

Q9UG63

Full Name:

ATP-binding cassette, sub-family F

(GCN20), member 2

Calculated MW:

71 kDa

Observed MW:

71 kDa

Purification Method:

Protein A purification

CloneNo.:

3E9C9

Recommended Dilutions:

WB 1:5000-1:50000

Applications

Tested Applications:

WB, ELISA

Species Specificity:

Human, mouse, rat

Positive Controls:

WB : HeLa cells, MCF-7 cells, MDA-MB-231 cells, Jurkat cells, MOLT-4 cells, K-562 cells, HSC-T6 cells, NIH/3T3 cells, 4T1 cells

Background Information

ABCF2 (ABC28, M-ABC1, HUSSY-18, EST133090, DKFZp586K1823) is a member of the superfamily of ATP-binding cassette (ABC) transporters. ABC proteins are composed of transmembrane domains (TMDs), and nucleotide binding domains (NBDs, or ATP-binding cassettes, ABSs). Based on their sequence similarity scores, the members of the human ABC protein family can be grouped into eight subfamilies, including the MDR/TAP, the ALD, the MRP/CFTR, the ABC1, the White, the RNaseL inhibitor, the ANSA, and the GCN20 subfamilies. ABCF2 is a member of the GCN20 subfamily. ABC proteins transport various molecules across extra- and intracellular membranes.

Storage

Storage:

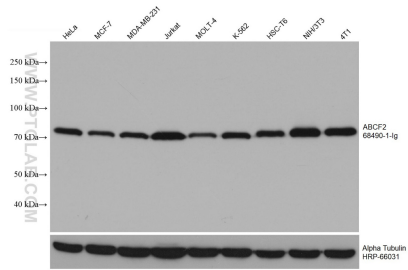
Store at -20°C. Stable for one year after shipment.

Storage Buffer:

PBS with 0.02% sodium azide and 50% glycerol pH 7.3.

Aliquoting is unnecessary for -20°C storage

Selected Validation Data



Various lysates were subjected to SDS PAGE followed by western blot with 68490-1-Ig (ABCF2 antibody) at dilution of 1:20000 incubated at room temperature for 1.5 hours. The membrane was stripped and reblotted with HRP-conjugated Alpha Tubulin Monoclonal antibody (HRP-66031) as loading control.