

METTL1 Monoclonal antibody, PBS Only

Catalog Number: 68501-1-PBS

Basic Information

Catalog Number:

68501-1-PBS

Size:

1 mg/ml

Source:

Mouse

Isotype:

IgG2a

Immunogen Catalog Number:

AG7055

GenBank Accession Number:

BC000550

GeneID (NCBI):

4234

UNIPROT ID:

Q9UBP6

Full Name:

methyltransferase like 1

Calculated MW:

31 kDa

Observed MW:

31 kDa

Purification Method:

Protein A purification

CloneNo.:

2C3G7

Applications

Tested Applications:

WB, ELISA

Species Specificity:

Human, mouse, pig

Background Information

METTL1 methyltransferase mediates m7G methylation within miRNAs and regulates cell migration via its catalytic activity. METTL1 can be inactivated by phosphorylation at Ser27 by protein kinase B (PKB α). Overexpression of METTL1 is widely observed among human cancers. It is also crucial for the regulation of chemoresistance in cancer treatment. In addition, mutations in the human N7-methylguanosine (m7G) methyltransferase complex METTL1/WDR4 cause primordial dwarfism and brain malformation.

Storage

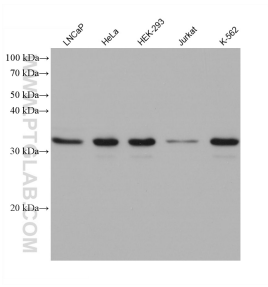
Storage:

Store at -80°C.

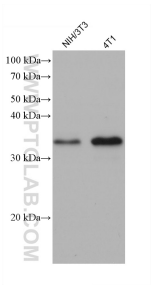
Storage Buffer:

PBS only

Selected Validation Data



Various lysates were subjected to SDS PAGE followed by western blot with 68501-1-Ig (METTL1 antibody) at dilution of 1:20000 incubated at room temperature for 1.5 hours. This data was developed using the same antibody clone with 68501-1-PBS in a different storage buffer formulation.



Various lysates were subjected to SDS PAGE followed by western blot with 68501-1-Ig (METTL1 antibody) at dilution of 1:20000 incubated at room temperature for 1.5 hours. This data was developed using the same antibody clone with 68501-1-PBS in a different storage buffer formulation.