

ATP1A1/2 Monoclonal antibody, PBS Only

Catalog Number: 68505-1-PBS

Basic Information

Catalog Number: 68505-1-PBS	GenBank Accession Number: BC052271	Purification Method: Protein G purification
Size: 1 mg/ml	GeneID (NCBI): 477	CloneNo.: 3D8G1
Source: Mouse	UNIPROT ID: P50993	
Isotype: IgG1	Full Name: ATPase, Na ⁺ /K ⁺ transporting, alpha 2 (+) polypeptide	
Immunogen Catalog Number: AG10489	Calculated MW: 1020 aa, 112 kDa	
	Observed MW: 97-100 kDa	

Applications

Tested Applications:
WB, Indirect ELISA

Species Specificity:
Human, mouse, rat, pig

Background Information

ATP1A1/2 is the catalytic component of the active enzyme Na⁺/K⁺-ATPase, which catalyzes the hydrolysis of ATP coupled with the exchange of sodium and potassium ions across the plasma membrane. The Na⁺/K⁺-ATPase is composed of a larger catalytic α -subunit (~110 kDa) and a small β -subunit (~55 kDa). The α -subunit has four isoforms identified to date: α 1, α 2, α 3 and α 4. The α 1 isoform is expressed ubiquitously but the α 2 isoform is present largely in the skeletal muscle, heart and vascular smooth muscle. The α 3 isoform is found almost exclusively in neurons and ovaries. The α 4 isoform is expressed in sperm. This antibody can recognize ATP1A1 and ATP1A2.

Storage

Storage:
Store at -80°C.

Storage Buffer:
PBS Only

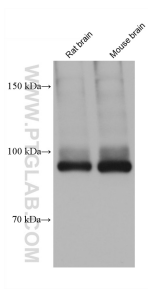
For technical support and original validation data for this product please contact:

T: 4006900926

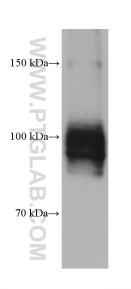
E: Proteintech-CN@ptglab.comW: ptgcn.com

This product is exclusively available under Proteintech Group brand and is not available to purchase from any other manufacturer.

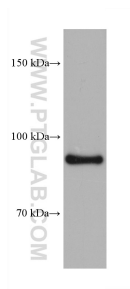
Selected Validation Data



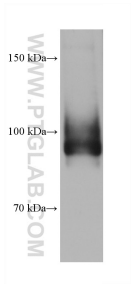
Various lysates were subjected to SDS PAGE followed by western blot with 68505-1-Ig (ATP1A1/2 antibody) at dilution of 1:20000 incubated at room temperature for 1.5 hours. This data was developed using the same antibody clone with 68505-1-PBS in a different storage buffer formulation.



SK-BR-3 cells were subjected to SDS PAGE followed by western blot with 68505-1-Ig (ATP1A1/2 antibody) at dilution of 1:20000 incubated at room temperature for 1.5 hours. This data was developed using the same antibody clone with 68505-1-PBS in a different storage buffer formulation.



rat kidney tissue were subjected to SDS PAGE followed by western blot with 68505-1-Ig (ATP1A1/2 antibody) at dilution of 1:20000 incubated at room temperature for 1.5 hours. This data was developed using the same antibody clone with 68505-1-PBS in a different storage buffer formulation.



pig brain tissue were subjected to SDS PAGE followed by western blot with 68505-1-Ig (ATP1A1/2 antibody) at dilution of 1:20000 incubated at room temperature for 1.5 hours. This data was developed using the same antibody clone with 68505-1-PBS in a different storage buffer formulation.