

For Research Use Only

ATP1A2 Monoclonal antibody, PBS Only (Capture)

Catalog Number: 68505-2-PBS



Basic Information

Catalog Number: 68505-2-PBS	GenBank Accession Number: BC052271	Purification Method: Protein G purification
Size: 1 mg/ml	GeneID (NCBI): 477	CloneNo.: 1F5C2
Source: Mouse	UNIPROT ID: P50993	
Isotype: IgG1	Full Name: ATPase, Na ⁺ /K ⁺ transporting, alpha 2 (+) polypeptide	
Immunogen Catalog Number: AG10489	Calculated MW: 1020 aa, 112 kDa	

Applications

Tested Applications:
Cytometric bead array, Indirect ELISA

Species Specificity:
human

Background Information

Storage

Storage:
Store at -80°C.
The product is shipped with ice packs. Upon receipt, store it immediately at -80°C

Storage Buffer:
PBS Only

For technical support and original validation data for this product please contact:

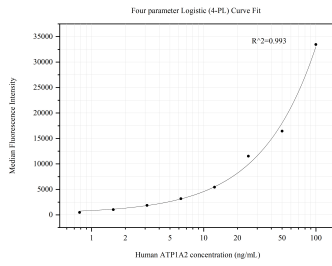
T: 4006900926

E: Proteintech-CN@ptglab.com

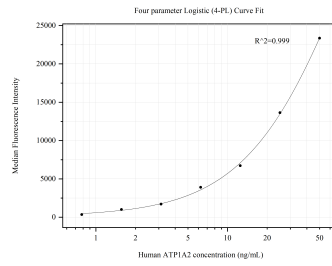
W: ptgcn.com

This product is exclusively available under Proteintech Group brand and is not available to purchase from any other manufacturer.

Selected Validation Data



Cytometric bead array standard curve of MP50523-1, ATP1A2 Monoclonal Matched Antibody Pair, PBS Only. Capture antibody: 68505-2-PBS. Detection antibody: 68504-2-PBS. Standard: Ag10489. Range: 0.781-100 ng/mL.



Cytometric bead array standard curve of MP50523-2, ATP1A2 Monoclonal Matched Antibody Pair, PBS Only. Capture antibody: 68505-2-PBS. Detection antibody: 68504-1-PBS. Standard: Ag10489. Range: 0.781-50 ng/mL.