

For Research Use Only

CDCA8 Monoclonal antibody, PBS Only

Catalog Number: 68510-1-PBS



Basic Information

Catalog Number: 68510-1-PBS	GenBank Accession Number: BC016944	Purification Method: Protein A purification
Size: 1mg/ml	GeneID (NCBI): 55143	CloneNo.: 2A10C9
Source: Mouse	UNIPROT ID: Q53HL2	
Isotype: IgG1	Full Name: cell division cycle associated 8	
Immunogen Catalog Number: AG3136	Calculated MW: 280 aa, 31 kDa	
	Observed MW: 31-38 kDa	

Applications

Tested Applications:
WB, IF/ICC, Indirect ELISA

Species Specificity:
human

Background Information

CDCA8, also named as Borealin, Dasra-B and PESCRG3, is a component of the chromosomal passenger complex (CPC), a complex that acts as a key regulator of mitosis. The predicted molecular weight of CDCA8 is about 31 kDa. This protein can be migrated to 35-40 kDa with phosphor modification or ~50 kDa with SUMO modification.

Storage

Storage:
Store at -80°C.
The product is shipped with ice packs. Upon receipt, store it immediately at -80°C

Storage Buffer:
PBS Only

For technical support and original validation data for this product please contact:

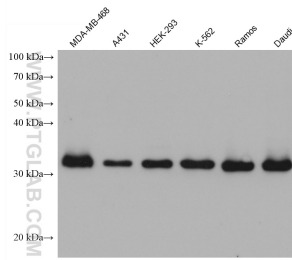
T: 4006900926

E: Proteintech-CN@ptglab.com

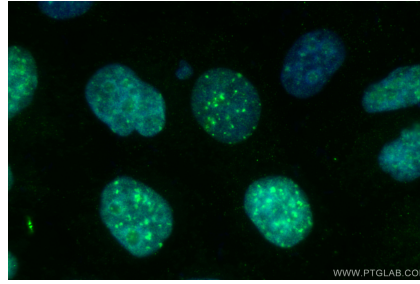
W: ptgcn.com

This product is exclusively available under Proteintech Group brand and is not available to purchase from any other manufacturer.

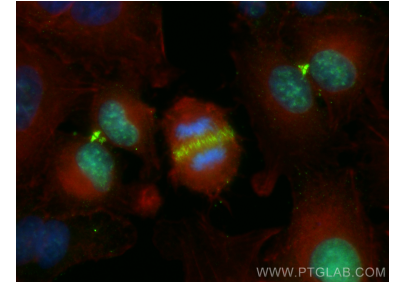
Selected Validation Data



Various lysates were subjected to SDS PAGE followed by western blot with 68510-1-Ig (CDCA8 antibody) at dilution of 1:10000 incubated at room temperature for 1.5 hours. This data was developed using the same antibody clone with 68510-1-PBS in a different storage buffer formulation.



Immunofluorescent analysis of (4% PFA) fixed A431 cells using CDCA8 antibody (68510-1-Ig, Clone: 2A10C9) at dilution of 1:800 and CoraLite® 488-Conjugated AffiniPure Goat Anti-Mouse IgG(H+L) (SA00013-1). This data was developed using the same antibody clone with 68510-1-PBS in a different storage buffer formulation.



Immunofluorescent analysis of (4% PFA) fixed A549 cells using CDCA8 antibody (68510-1-Ig, Clone: 2A10C9) at dilution of 1:800 and CoraLite® 488-Conjugated Goat Anti-Mouse IgG(H+L) (SA00013-1), CL594-Phalloidin (red). This data was developed using the same antibody clone with 68510-1-PBS in a different storage buffer formulation.