

For Research Use Only

# POLR2F Monoclonal antibody, PBS Only



Catalog Number: 68511-1-PBS

## Basic Information

<b>Catalog Number:</b> 68511-1-PBS	<b>GenBank Accession Number:</b> BC003582	<b>Purification Method:</b> Protein A purification
<b>Size:</b> 1 mg/ml	<b>GeneID (NCBI):</b> 5435	<b>CloneNo.:</b> 2D4D12
<b>Source:</b> Mouse	<b>UNIPROT ID:</b> P61218	
<b>Isotype:</b> IgG2a	<b>Full Name:</b> polymerase (RNA) II (DNA directed) polypeptide F	
<b>Immunogen Catalog Number:</b> AG7472	<b>Calculated MW:</b> 14 kDa	
	<b>Observed MW:</b> 23 kDa	

## Applications

**Tested Applications:**  
WB, Indirect ELISA

**Species Specificity:**  
Human, mouse

## Background Information

### Storage

**Storage:**  
Store at -80°C.  
**Storage Buffer:**  
PBS Only

For technical support and original validation data for this product please contact:

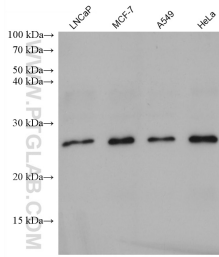
T: 4006900926

E: [Proteintech-CN@ptglab.com](mailto:Proteintech-CN@ptglab.com)

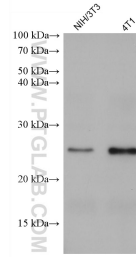
W: [ptgcn.com](http://ptgcn.com)

This product is exclusively available under Proteintech Group brand and is not available to purchase from any other manufacturer.

## Selected Validation Data



Various lysates were subjected to SDS PAGE followed by western blot with 68511-1-Ig (POLR2F antibody) at dilution of 1:5000 incubated at room temperature for 1.5 hours. This data was developed using the same antibody clone with 68511-1-PBS in a different storage buffer formulation.



Various lysates were subjected to SDS PAGE followed by western blot with 68511-1-Ig (POLR2F antibody) at dilution of 1:5000 incubated at room temperature for 1.5 hours. This data was developed using the same antibody clone with 68511-1-PBS in a different storage buffer formulation.