

For Research Use Only

MTHFD2 Monoclonal antibody, PBS Only



Catalog Number: 68524-1-PBS

Basic Information

Catalog Number:

68524-1-PBS

Size:

1 mg/ml

Source:

Mouse

Isotype:

IgG2a

Immunogen Catalog Number:

AG33605

GenBank Accession Number:

BC017054

GeneID (NCBI):

10797

UNIPROT ID:

P13995

Full Name:

methylenetetrahydrofolate dehydrogenase (NADP+ dependent) 2, methenyltetrahydrofolate cyclohydrolase

Calculated MW:

350 aa, 38 kDa

Observed MW:

33-38 kDa

Purification Method:

Protein A purification

CloneNo.:

1B4B6

Applications

Tested Applications:

WB, Indirect ELISA, IHC

Species Specificity:

Human, Mouse

Background Information

Methylenetetrahydrofolate dehydrogenase 2 (MTHFD2) is a folate-coupled mitochondrial metabolic enzyme characterized by methylenetetrahydrofolate dehydrogenase and cyclohydrolase activity. It was demonstrated that suppression of MTHFD2 inhibits methylation reactions, decreases protein synthesis and disrupts redox homeostasis, which may ultimately result in significant changes in cellular metabolic phenotype. MTHFD2 is reported to be up-regulated in various tumours, such as lung adenocarcinoma (PMID: 34121323) and breast cancer (PMID: 34007312).

Storage

Storage:

Store at -80°C.

Storage Buffer:

PBS Only

For technical support and original validation data for this product please contact:

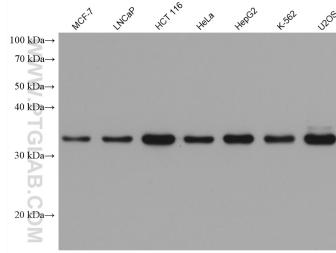
T: 4006900926

E: Proteintech-CN@ptglab.com

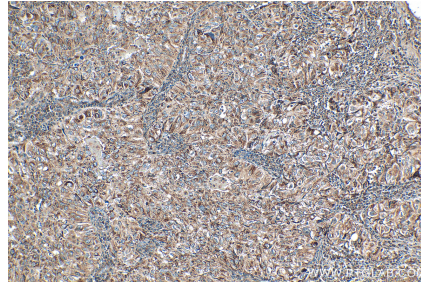
W: ptgcn.com

This product is exclusively available under Proteintech Group brand and is not available to purchase from any other manufacturer.

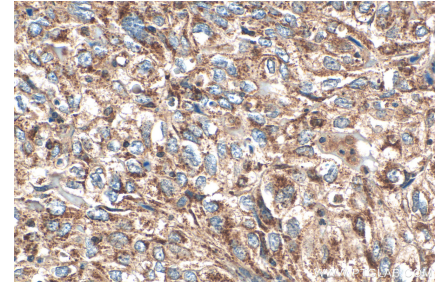
Selected Validation Data



Various lysates were subjected to SDS PAGE followed by western blot with 68524-1-Ig (MTHFD2 antibody) at dilution of 1:10000 incubated at room temperature for 1.5 hours. This data was developed using the same antibody clone with 68524-1-PBS in a different storage buffer formulation.



Immunohistochemical analysis of paraffin-embedded human lung cancer tissue slide using 68524-1-Ig (MTHFD2 antibody) at dilution of 1:500 (under 10x lens). Heat mediated antigen retrieval with Tris-EDTA buffer (pH 9.0). This data was developed using the same antibody clone with 68524-1-PBS in a different storage buffer formulation.



Immunohistochemical analysis of paraffin-embedded human lung cancer tissue slide using 68524-1-Ig (MTHFD2 antibody) at dilution of 1:500 (under 40x lens). Heat mediated antigen retrieval with Tris-EDTA buffer (pH 9.0). This data was developed using the same antibody clone with 68524-1-PBS in a different storage buffer formulation.