

For Research Use Only

MTHFD2 Monoclonal antibody, PBS Only (Capture)



Catalog Number: 68524-4-PBS

Basic Information

Catalog Number: 68524-4-PBS	GenBank Accession Number: BC017054	Purification Method: Protein G purification
Size: 1 mg/ml	GeneID (NCBI): 10797	CloneNo.: 2F9A8
Source: Mouse	UNIPROT ID: P13995	
Isotype: IgG1	Full Name: methylenetetrahydrofolate dehydrogenase (NADP+ dependent) 2, methenyltetrahydrofolate cyclohydrolase	
Immunogen Catalog Number: AG33605	Calculated MW: 350 aa, 38 kDa	

Applications

Tested Applications:
Cytometric bead array, Indirect ELISA

Species Specificity:
human

Background Information

Storage

Storage:
Store at -80°C.
The product is shipped with ice packs. Upon receipt, store it immediately at -80°C

Storage Buffer:
PBS Only

For technical support and original validation data for this product please contact:

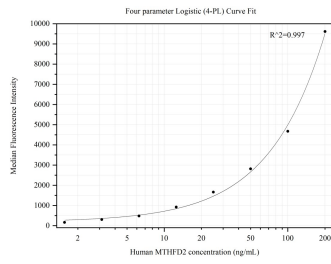
T: 4006900926

E: Proteintech-CN@ptglab.com

W: ptgcn.com

This product is exclusively available under Proteintech Group brand and is not available to purchase from any other manufacturer.

Selected Validation Data



Cytometric bead array standard curve of MP50286-2, MTHFD2 Monoclonal Matched Antibody Pair, PBS Only. Capture antibody: 68524-4-PBS. Detection antibody: 68524-3-PBS. Standard: Ag33605. Range: 1.563-200 ng/mL.