

For Research Use Only

# MTCO2 Monoclonal antibody, PBS Only



Catalog Number: 68527-1-PBS

## Basic Information

<b>Catalog Number:</b> 68527-1-PBS	<b>GenBank Accession Number:</b> YP_003024029	<b>Purification Method:</b> Protein A purification
<b>Size:</b> 1 mg/ml	<b>GeneID (NCBI):</b> 4513	<b>CloneNo.:</b> 10G14F4
<b>Source:</b> Mouse	<b>UNIPROT ID:</b> P00403	
<b>Isotype:</b> IgG1	<b>Full Name:</b> cytochrome c oxidase II	
	<b>Calculated MW:</b> 26 kDa	
	<b>Observed MW:</b> 23-26 kDa	

## Applications

**Tested Applications:**  
WB, Indirect ELISA

**Species Specificity:**  
Human

## Background Information

MTCO2, also named as COII, COXII, and COX2, belongs to the cytochrome c oxidase subunit 2 family. It is the component of the respiratory chain that catalyzes the reduction of oxygen to water. Subunits 1-3 form the functional core of the enzyme complex. Subunit 2 transfers the electrons from cytochrome c via its binuclear copper A center to the bimetallic center of the catalytic subunit 1. Defects in COX2 are a cause of mitochondrial complex IV deficiency (MT-C4D).

## Storage

**Storage:**  
Store at -80°C.

**Storage Buffer:**  
PBS Only

For technical support and original validation data for this product please contact:

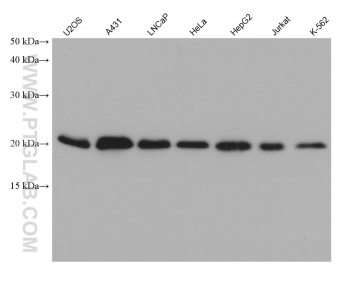
T: 4006900926

E: [Proteintech-CN@ptglab.com](mailto:Proteintech-CN@ptglab.com)

W: [ptgcn.com](http://ptgcn.com)

**This product is exclusively available under Proteintech Group brand and is not available to purchase from any other manufacturer.**

## Selected Validation Data



Various lysates were subjected to SDS PAGE followed by western blot with 68527-1-Ig (MTCO2 antibody) at dilution of 1:10000 incubated at room temperature for 1.5 hours. This data was developed using the same antibody clone with 68527-1-PBS in a different storage buffer formulation.