

For Research Use Only

# IKBKE Monoclonal antibody

Catalog Number: 68531-1-Ig



## Basic Information

**Catalog Number:**

68531-1-Ig

**Size:**

1000 µg/ml

**Source:**

Mouse

**Isotype:**

IgG1

**Immunogen Catalog Number:**

AG30374

**GenBank Accession Number:**

BC107812

**GeneID (NCBI):**

9641

**UNIPROT ID:**

Q14164

**Full Name:**

inhibitor of kappa light polypeptide  
gene enhancer in B-cells, kinase  
epsilon

**Calculated MW:**

716 aa, 80 kDa

**Observed MW:**

80 kDa

**Purification Method:**

Protein G purification

**CloneNo.:**

3E4H7

**Recommended Dilutions:**

WB 1:5000-1:50000

## Applications

**Tested Applications:**

WB, ELISA

**Species Specificity:**

Human

**Positive Controls:**

WB : SK-BR-3 cells, Jurkat cells, MCF-7 cells, HeLa cells,  
Raji cells, Ramos cells, Daudi cells, HL-60 cells, THP-1  
cells

## Background Information

IKBKE is a serine/threonine kinase that plays an essential role in regulating inflammatory responses to viral infection, through the activation of the type I IFN, NF-kappa-B and STAT signaling. It is also involved in TNFA and inflammatory cytokines, like Interleukin-1, signaling.

## Storage

**Storage:**

Store at -20°C. Stable for one year after shipment.

**Storage Buffer:**

PBS with 0.02% sodium azide and 50% glycerol pH 7.3.

Aliquoting is unnecessary for -20°C storage

For technical support and original validation data for this product please contact:

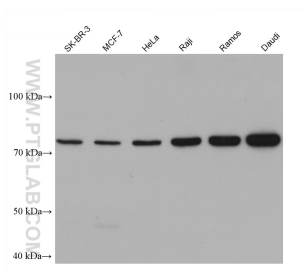
T: 4006900926

E: Proteintech-CN@ptglab.com

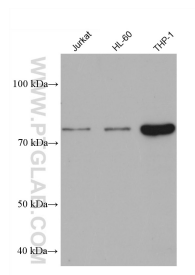
W: ptgcn.com

**This product is exclusively available under Proteintech Group brand and is not available to purchase from any other manufacturer.**

## Selected Validation Data



Various lysates were subjected to SDS PAGE followed by western blot with 68531-1-Ig (IKBKE antibody) at dilution of 1:10000 incubated at room temperature for 1.5 hours.



Various lysates were subjected to SDS PAGE followed by western blot with 68531-1-Ig (IKBKE antibody) at dilution of 1:10000 incubated at room temperature for 1.5 hours.