

For Research Use Only

# IKBKE Monoclonal antibody, PBS Only



Catalog Number: 68531-1-PBS

## Basic Information

|   |  |   |
|---|--|---|
| <b>Catalog Number:</b><br>68531-1-PBS       | <b>GenBank Accession Number:</b><br>BC107812   | <b>Purification Method:</b><br>Protein G purification |
| <b>Size:</b><br>1 mg/ml                     | <b>GeneID (NCBI):</b><br>9641  | <b>CloneNo.:</b><br>3E4H7                             |
| <b>Source:</b><br>Mouse                     | <b>UNIPROT ID:</b><br>Q14164   |   |
| <b>Isotype:</b><br>IgG1                     | <b>Full Name:</b><br>inhibitor of kappa light polypeptide<br>gene enhancer in B-cells, kinase<br>epsilon |   |
| <b>Immunogen Catalog Number:</b><br>AG30374 | <b>Calculated MW:</b><br>716 aa, 80 kDa  |   |
|   | <b>Observed MW:</b><br>80 kDa  |   |

## Applications

**Tested Applications:**  
WB, Indirect ELISA

**Species Specificity:**  
Human

## Background Information

IKBKE is a serine/threonine kinase that plays an essential role in regulating inflammatory responses to viral infection, through the activation of the type I IFN, NF-kappa-B and STAT signaling. It is also involved in TNFA and inflammatory cytokines, like Interleukin-1, signaling.

## Storage

**Storage:**  
Store at -80°C.  
**The product is shipped with ice packs. Upon receipt, store it immediately at -80°C**

**Storage Buffer:**  
PBS Only

For technical support and original validation data for this product please contact:

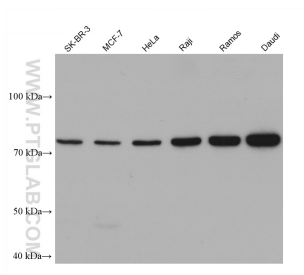
T: 4006900926

E: [Proteintech-CN@ptglab.com](mailto:Proteintech-CN@ptglab.com)

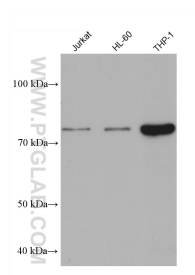
W: [ptgcn.com](http://ptgcn.com)

**This product is exclusively available under Proteintech Group brand and is not available to purchase from any other manufacturer.**

## Selected Validation Data



Various lysates were subjected to SDS PAGE followed by western blot with 68531-1-Ig (IKBKE antibody) at dilution of 1:10000 incubated at room temperature for 1.5 hours. This data was developed using the same antibody clone with 68531-1-PBS in a different storage buffer formulation.



Various lysates were subjected to SDS PAGE followed by western blot with 68531-1-Ig (IKBKE antibody) at dilution of 1:10000 incubated at room temperature for 1.5 hours. This data was developed using the same antibody clone with 68531-1-PBS in a different storage buffer formulation.