

For Research Use Only

# SLC1A5/ASCT2 Monoclonal antibody, PBS Only



Catalog Number: 68540-1-PBS

## Basic Information

Catalog Number:

68540-1-PBS

Size:

1mg/ml

Source:

Mouse

Isotype:

IgG1

Immunogen Catalog Number:

AG16837

GenBank Accession Number:

BC000062

GeneID (NCBI):

6510

UNIPROT ID:

Q15758

Full Name:

solute carrier family 1 (neutral amino acid transporter), member 5

Calculated MW:

541 aa, 57 kDa

Observed MW:

55-70 kDa

Purification Method:

Protein G purification

CloneNo.:

1C4E1

## Applications

Tested Applications:

WB, FC, IHC, Indirect ELISA

Species Specificity:

Human

## Background Information

SLC1A5 (Solute Carrier Family 1, member 5), also named as ASCT2, a major glutamine transporter belonging to the SLC1 family and localized in the plasma membrane of several body districts. Consistent with the functions exerted by glutamine, SLC1A5 is involved in uptake of essential amino acids, activation of mTORC1 and glutamine-dependent tumor cell survival and growth. SLC1A5 is highly expressed in various malignancies and plays a critical role in the transformation, growth and survival of cancer cells (PMID: 30234109). High SLC1A5 expression is associated with poor prognosis in clear-cell renal cell carcinoma (PMID: 26599282).

## Storage

Storage:

Store at -80°C.

Storage Buffer:

PBS Only

For technical support and original validation data for this product please contact:

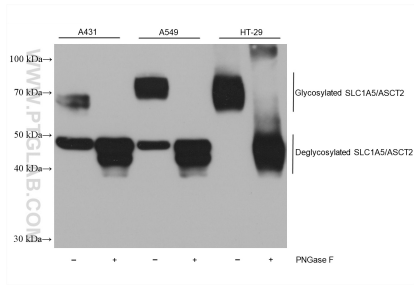
T: 4006900926

E: [Proteintech-CN@ptglab.com](mailto:Proteintech-CN@ptglab.com)

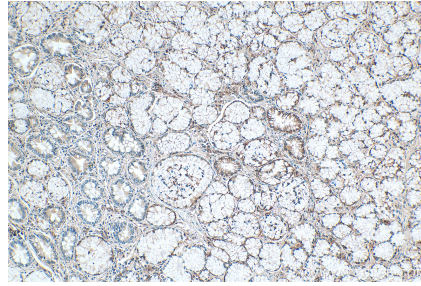
W: [ptgcn.com](http://ptgcn.com)

**This product is exclusively available under Proteintech Group brand and is not available to purchase from any other manufacturer.**

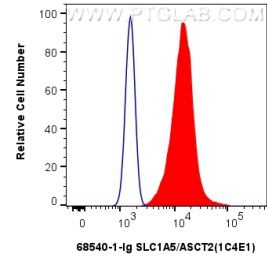
## Selected Validation Data



Various lysates were subjected to SDS PAGE followed by western blot with 68540-1-Ig (SLC1A5/ASCT2 antibody) at dilution of 1:10000 incubated at room temperature for 1.5 hours. This data was developed using the same antibody clone with 68540-1-PBS in a different storage buffer formulation.



Immunohistochemical analysis of paraffin-embedded human stomach cancer tissue slide using 68540-1-Ig (RDRC antibody) at dilution of 1:2000 (under 10x lens). Heat mediated antigen retrieval with Tris-EDTA buffer (pH 9.0). This data was developed using the same antibody clone with 68540-1-PBS in a different storage buffer formulation.



1X10<sup>6</sup> HeLa cells were intracellularly stained with 0.4 ug Anti-Human SLC1A5/ASCT2 (68540-1-Ig, Clone:1C4E1) and CoraLite®488-Conjugated AffiniPure Goat Anti-Mouse IgG(H+L) at dilution 1:1000 (red), or 0.4 ug Mouse IgG1 Isotype Control (MOPC-21) (65124-1-Ig, Clone: MOPC-21) (blue). Cells were fixed with 4% PFA and permeabilized with Flow Cytometry Perm Buffer (PF00011-C). This data was developed using the same antibody clone with 68540-1-