

For Research Use Only

# SUCLA2 Monoclonal antibody, PBS Only



Catalog Number: 68549-1-PBS

## Basic Information

Catalog Number:

68549-1-PBS

Size:

1mg/ml

Source:

Mouse

Isotype:

IgG2b

Immunogen Catalog Number:

AG17967

GenBank Accession Number:

BC027587

GeneID (NCBI):

8803

UNIPROT ID:

Q9P2R7

Full Name:

succinate-CoA ligase, ADP-forming, beta subunit

Calculated MW:

463 aa, 50 kDa

Observed MW:

48-50 kDa

Purification Method:

Protein A purification

CloneNo.:

2C7E4

## Applications

Tested Applications:

WB, IF, Indirect ELISA

Species Specificity:

Human, mouse

## Background Information

SUCLA2,  $\beta$  subunit of succinate-CoA ligase, contributes to energy production in mitochondria through the succinate-CoA ligase enzyme. Succinate-CoA ligase catalyses the reversible conversion of succinyl-CoA and ADP or GDP to succinate and ATP or GTP. SUCLA2 mutations cause global protein succinylation and mitochondrial DNA depletion (PMID: 33230181, PMID: 20301762). Mutations in SUCLA2 are also associated with SUCLA2-related mitochondrial DNA depletion syndrome, Leigh syndrome, down syndrome (PMID: 23010432).

## Storage

Storage:

Store at  $-80^{\circ}\text{C}$ .

Storage Buffer:

PBS Only

For technical support and original validation data for this product please contact:

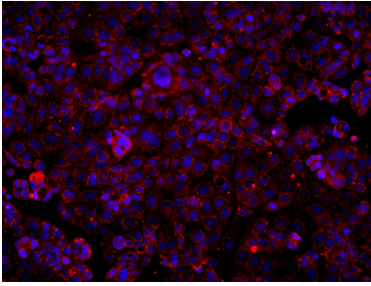
T: 4006900926

E: [Proteintech-CN@ptglab.com](mailto:Proteintech-CN@ptglab.com)

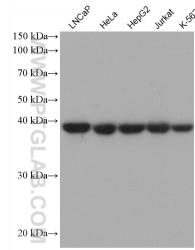
W: [ptgcn.com](http://ptgcn.com)

This product is exclusively available under Proteintech Group brand and is not available to purchase from any other manufacturer.

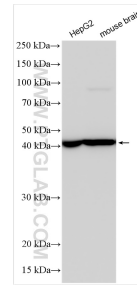
## Selected Validation Data



Immunofluorescent analysis of (4% PFA) fixed Caco-2 cells using SUCLA2 antibody (68549-1-Ig, Clone: 2C7E4) at dilution of 1:1000 and Multi-rAb CoraLite® Plus 594-Goat Anti-Mouse Recombinant Secondary Antibody (H+L) (Cat.NO. RGAM004). This data was developed using the same antibody clone with 68549-1-PBS in a different storage buffer formulation.



Various lysates were subjected to SDS PAGE followed by western blot with 68549-1-Ig (SUCLA2 antibody) at dilution of 1:9900 incubated at room temperature for 1.5 hours. This data was developed using the same antibody clone with 68549-1-PBS in a different storage buffer formulation.



Various lysates were subjected to SDS PAGE followed by western blot with 68549-1-Ig (SUCLA2 antibody) at dilution of 1:8000 incubated at room temperature for 1.5 hours. This data was developed using the same antibody clone with 68549-1-PBS in a different storage buffer formulation.