

For Research Use Only

# RAB35 Monoclonal antibody, PBS Only



Catalog Number: 68552-1-PBS

## Basic Information

<b>Catalog Number:</b> 68552-1-PBS	<b>GenBank Accession Number:</b> BC015931	<b>Purification Method:</b> Protein A purification
<b>Size:</b> 1 mg/ml	<b>GeneID (NCBI):</b> 11021	<b>CloneNo.:</b> 3H3E1
<b>Source:</b> Mouse	<b>UNIPROT ID:</b> Q15286	
<b>Isotype:</b> IgG2a	<b>Full Name:</b> RAB35, member RAS oncogene family	
<b>Immunogen Catalog Number:</b> AG21424	<b>Calculated MW:</b> 201 aa, 23 kDa	
	<b>Observed MW:</b> 23 kDa	

## Applications

**Tested Applications:**  
WB, Indirect ELISA

**Species Specificity:**  
Human, mouse, rat, rabbit

## Background Information

RAB35 is a member of the small GTPase superfamily. Like the other Rab proteins, RAB35 has 2 consecutive cysteine residues at its C terminus, and this region is thought to be involved in membrane association. Rab35 is found on the cell surface and endosomes, where it has been proposed to play a role in recycling of the transferrin and other receptors.

## Storage

**Storage:**  
Store at -80°C.

**Storage Buffer:**  
PBS Only

For technical support and original validation data for this product please contact:

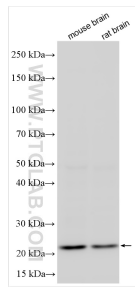
T: 4006900926

E: [Proteintech-CN@ptglab.com](mailto:Proteintech-CN@ptglab.com)

W: [ptgcn.com](http://ptgcn.com)

**This product is exclusively available under Proteintech Group brand and is not available to purchase from any other manufacturer.**

## Selected Validation Data



Various lysates were subjected to SDS PAGE followed by western blot with 68552-1-Ig (RAB35 antibody) at dilution of 1:4000 incubated at room temperature for 1.5 hours. This data was developed using the same antibody clone with 68552-1-PBS in a different storage buffer formulation.