

For Research Use Only

# RB1CC1 Monoclonal antibody, PBS Only



Catalog Number: 68564-1-PBS

## Basic Information

<b>Catalog Number:</b> 68564-1-PBS	<b>GenBank Accession Number:</b> BC017556	<b>Purification Method:</b> Protein G purification
<b>Size:</b> 1 mg/ml	<b>GeneID (NCBI):</b> 9821	<b>CloneNo.:</b> 1G8C8
<b>Source:</b> Mouse	<b>UNIPROT ID:</b> Q8TDY2	
<b>Isotype:</b> IgG1	<b>Full Name:</b> RB1-inducible coiled-coil 1	
<b>Immunogen Catalog Number:</b> AG10508	<b>Calculated MW:</b> 1594 aa, 183 kDa	
	<b>Observed MW:</b> 200 kDa	

## Applications

**Tested Applications:**  
WB, Indirect ELISA

**Species Specificity:**  
Human, mouse, rat

## Background Information

RB1CC1, also named as RBICC or FIP200, is implicated in the regulation of RB1 expression and functions as a DNA-binding transcription factor. It is a potent regulator of the RB1 pathway and a mediator that plays a crucial role in muscular differentiation. Its expression is, thus, a prerequisite for myogenic differentiation. Involved in autophagy. RB1CC1 is required for autophagosome formation. It is probably involved in the tumorigenesis of breast cancer. RB1CC1 is frequently mutated in breast cancer and shows characteristics of a classical tumor suppressor gene.

## Storage

**Storage:**  
Store at -80°C.

**Storage Buffer:**  
PBS Only

For technical support and original validation data for this product please contact:

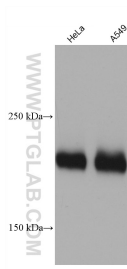
T: 4006900926

E: [Proteintech-CN@ptglab.com](mailto:Proteintech-CN@ptglab.com)

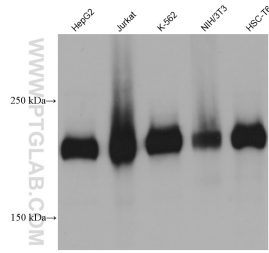
W: [ptgcn.com](http://ptgcn.com)

This product is exclusively available under Proteintech Group brand and is not available to purchase from any other manufacturer.

## Selected Validation Data



Various lysates were subjected to SDS PAGE followed by western blot with 68564-1-Ig (RB1CC1 antibody) at dilution of 1:10000 incubated at room temperature for 1.5 hours. This data was developed using the same antibody clone with 68564-1-PBS in a different storage buffer formulation.



Various lysates were subjected to SDS PAGE followed by western blot with 68564-1-Ig (RB1CC1 antibody) at dilution of 1:10000 incubated at room temperature for 1.5 hours. This data was developed using the same antibody clone with 68564-1-PBS in a different storage buffer formulation.