

For Research Use Only

# ALAS1 Monoclonal antibody, PBS Only (Capture)



Catalog Number: 68567-2-PBS

## Basic Information

Catalog Number:

68567-2-PBS

Size:

1 mg/ml

Source:

Mouse

Isotype:

IgG1

Immunogen Catalog Number:

AG33580

GenBank Accession Number:

BC011798

GeneID (NCBI):

211

UNIPROT ID:

P13196

Full Name:

aminolevulinate, delta-, synthase 1

Calculated MW:

640 aa, 71 kDa

Purification Method:

Protein G Magarose purification

CloneNo.:

2G12C7

## Applications

Tested Applications:

Indirect ELISA, Cytometric bead array

Species Specificity:

Human

## Background Information

### Storage

Storage:

Store at -80°C.

The product is shipped with ice packs. Upon receipt, store it immediately at -80°C

Storage Buffer:

PBS Only

For technical support and original validation data for this product please contact:

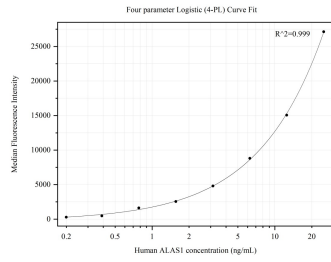
T: 4006900926

E: [Proteintech-CN@ptglab.com](mailto:Proteintech-CN@ptglab.com)

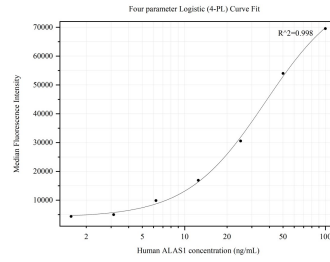
W: [ptgcn.com](http://ptgcn.com)

This product is exclusively available under Proteintech Group brand and is not available to purchase from any other manufacturer.

## Selected Validation Data



Cytometric bead array standard curve of MP50232-1, ALAS1 Monoclonal Matched Antibody Pair, PBS Only. Capture antibody: 68567-2-PBS. Detection antibody: 68567-3-PBS. Standard:Ag33580. Range: 0.195-25 ng/mL



Cytometric bead array standard curve of MP50232-2, ALAS1 Monoclonal Matched Antibody Pair, PBS Only. Capture antibody: 68567-2-PBS. Detection antibody: 68567-4-PBS. Standard:Ag33580. Range: 1.563-100 ng/mL