

For Research Use Only

TAPBPL Monoclonal antibody, PBS Only



Catalog Number: 68577-1-PBS

Basic Information

Catalog Number: 68577-1-PBS	GenBank Accession Number: BC015017	Purification Method: Protein G purification
Size: 1mg/ml	GeneID (NCBI): 55080	CloneNo.: 1D12C2
Source: Mouse	UNIPROT ID: Q9BX59	
Isotype: IgG1	Full Name: TAP binding protein-like	
Immunogen Catalog Number: AG14371	Calculated MW: 468 aa, 50 kDa	
	Observed MW: 55 kDa	

Applications

Tested Applications:
Indirect ELISA, WB

Species Specificity:
human

Background Information

TAPBPL, also named as TAPBP-R and TAPASIN-R, is a member of the variable-constant Ig superfamily that links MHC class I molecules to the transporter associated with antigen processing in the endoplasmic reticulum.

Storage

Storage:
Store at -80°C.
The product is shipped with ice packs. Upon receipt, store it immediately at -80°C

Storage Buffer:
PBS Only

For technical support and original validation data for this product please contact:

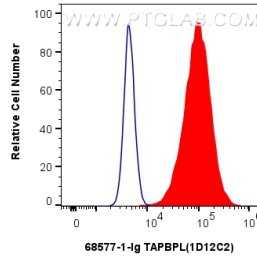
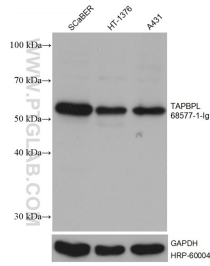
T: 4006900926

E: Proteintech-CN@ptglab.com

W: ptgcn.com

This product is exclusively available under Proteintech Group brand and is not available to purchase from any other manufacturer.

Selected Validation Data



Various lysates were subjected to SDS PAGE followed by western blot with 68577-1-Ig (TAPBPL antibody) at dilution of 1:10000 incubated at room temperature for 1.5 hours. The membrane was stripped and reblotted with HRP-conjugated GAPDH Monoclonal antibody (HRP-60004) as loading control. This data was developed using the same antibody clone with 68577-1-PBS in a different storage buffer formulation.

1×10^6 A431 cells were intracellularly stained with 0.4 μ g TAPBPL Monoclonal antibody (68577-1-Ig, Clone: 1D12C2) and Multi-rAb CoraLite[®] Plus 488-Goat Anti-Mouse Recombinant Secondary Antibody (H+L) (RGAM002) (red), or 0.4 μ g Mouse IgG1 isotype control Mouse McAb (66360-1-Ig, Clone: 1F8D3) (blue). Cells were fixed with 4% PFA and permeabilized with Flow Cytometry Perm Buffer (PF00011-C). This data was developed using the same antibody clone.

