

For Research Use Only

# AEG-1/MTDH Monoclonal antibody

Catalog Number: 68592-1-Ig



## Basic Information

<b>Catalog Number:</b> 68592-1-Ig	<b>GenBank Accession Number:</b> BC045642	<b>Purification Method:</b> Protein G purification
<b>Size:</b> 1000 µg/ml	<b>GeneID (NCBI):</b> 92140	<b>CloneNo.:</b> 1D8C2
<b>Source:</b> Mouse	<b>UNIPROT ID:</b> Q86UE4	<b>Recommended Dilutions:</b> WB 1:5000-1:50000
<b>Isotype:</b> IgG1	<b>Full Name:</b> metadherin	
<b>Immunogen Catalog Number:</b> AG5033	<b>Calculated MW:</b> 582 aa, 64 kDa	
	<b>Observed MW:</b> 70-80 kDa	

## Applications

<b>Tested Applications:</b> WB, ELISA	<b>Positive Controls:</b> WB : A431 cells, MCF-10A cells, A549 cells, LNCaP cells, HeLa cells, Jurkat cells, MOLT-4 cells
<b>Species Specificity:</b> Human	

## Background Information

MTDH, also known as AEG-1, is a single-pass transmembrane protein with its gene located at chromosome 8q22, the abnormalities of which have been identified in several tumor types. MTDH is overexpressed in a number of malignancies, such as breast cancer, malignant glioma, and neuroblastoma, and its overexpression is associated with poor clinical outcome. MTDH plays an important role in the regulation of carcinogenesis and tumor progression.

## Storage

**Storage:**  
Store at -20°C. Stable for one year after shipment.  
**Storage Buffer:**  
PBS with 0.02% sodium azide and 50% glycerol pH 7.3.  
Aliquoting is unnecessary for -20°C storage

For technical support and original validation data for this product please contact:

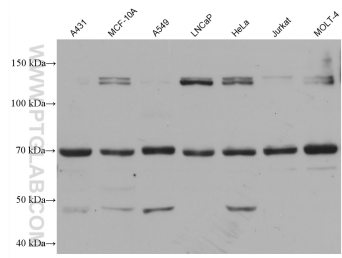
T: 4006900926

E: [Proteintech-CN@ptglab.com](mailto:Proteintech-CN@ptglab.com)

W: [ptgcn.com](http://ptgcn.com)

**This product is exclusively available under Proteintech Group brand and is not available to purchase from any other manufacturer.**

## Selected Validation Data



Various lysates were subjected to SDS PAGE followed by western blot with 68592-1-Ig (AEG-1 antibody) at dilution of 1:10000 incubated at room temperature for 1.5 hours.