

For Research Use Only

PLAGL2 Monoclonal antibody, PBS Only



Catalog Number: 68606-1-PBS

Basic Information

Catalog Number: 68606-1-PBS	GenBank Accession Number: BC023655	Purification Method: Protein G purification
Size: 1 mg/ml	GeneID (NCBI): 5326	CloneNo.: 3C2E5
Source: Mouse	UNIPROT ID: Q9UPG8	
Isotype: IgG1	Full Name: pleiomorphic adenoma gene-like 2	
Immunogen Catalog Number: AG30227	Calculated MW: 496 aa, 55 kDa	
	Observed MW: 50-55 kDa	

Applications

Tested Applications:
WB, Indirect ELISA

Species Specificity:
Human, rabbit

Background Information

PLAGL2, also named KIAA0198, belongs to the krueppel C2H2-type zinc-finger protein family. It shows weak transcriptional activatory activity. PLAGL2, a proto-oncogene, is implicated in a variety of cancers including acute myeloid leukemia (AML), malignant glioma, colon cancer, and lung adenocarcinoma. PLAGL2 can function as a tumor suppressor by initiating cell cycle arrest and apoptosis. The calculated molecular weight of PLAGL2 is 55 kDa, but the SUMO1-modified form is 68 kDa (PMID: 30535429).

Storage

Storage:
Store at -80°C.
The product is shipped with ice packs. Upon receipt, store it immediately at -80°C

Storage Buffer:
PBS Only

For technical support and original validation data for this product please contact:

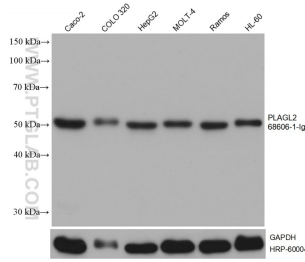
T: 4006900926

E: Proteintech-CN@ptglab.com

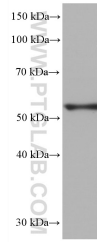
W: ptgcn.com

This product is exclusively available under Proteintech Group brand and is not available to purchase from any other manufacturer.

Selected Validation Data



Various lysates were subjected to SDS PAGE followed by western blot with 68606-1-Ig (PLAGL2 antibody) at dilution of 1:5000 incubated at room temperature for 1.5 hours. The membrane was stripped and reblotted with HRP-conjugated GAPDH Monoclonal antibody (HRP-60004) as loading control. This data was developed using the same antibody clone with 68606-1-PBS in a different storage buffer formulation.



rabbit testis tissue were subjected to SDS PAGE followed by western blot with 68606-1-Ig (PLAGL2 antibody) at dilution of 1:5000 incubated at room temperature for 1.5 hours. This data was developed using the same antibody clone with 68606-1-PBS in a different storage buffer formulation.