

For Research Use Only

# KANK1 Monoclonal antibody, PBS Only

Catalog Number: 68613-1-PBS



## Basic Information

Catalog Number: 68613-1-PBS	GenBank Accession Number: NM_015158	Purification Method: Protein G purification
Size: 1mg/ml	GeneID (NCBI): 23189	CloneNo.: 2D3G8
Source: Mouse	UNIPROT ID: Q14678	
Isotype: IgG1	Full Name: KN motif and ankyrin repeat domains	
Immunogen Catalog Number: AG31440	1	
	Calculated MW: 147KD	
	Observed MW: 130-200 kDa	

## Applications

**Tested Applications:**  
WB, IF/ICC, FC (Intra), Indirect ELISA

**Species Specificity:**  
human

## Background Information

KANK1 (KN motif and ankyrin repeat domain-containing protein 1) is involved in the control of cytoskeleton formation by regulating actin polymerization, inhibiting actin fiber formation and cell migration (PMID: 25961457). It inhibits RhoA activity, the formation of lamellipodia but not of filopodia (PMID: 25961457, PMID: 5961457). It also inhibits fibronectin-mediated cell spreading and regulates Rac signaling pathways (PMID: 25961457). Talin-KANK1 interaction controls the recruitment of cortical microtubule stabilizing complexes to focal adhesions (PMID: 27410476). KANK1 can be detected 130-200 kDa (PMID: 15823577, PMID: 33253712, PMID: 35805114).

## Storage

**Storage:**  
Store at -80°C.  
**The product is shipped with ice packs. Upon receipt, store it immediately at -80°C**

**Storage Buffer:**  
PBS Only

For technical support and original validation data for this product please contact:

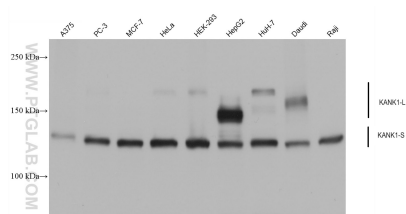
T: 4006900926

E: [Proteintech-CN@ptglab.com](mailto:Proteintech-CN@ptglab.com)

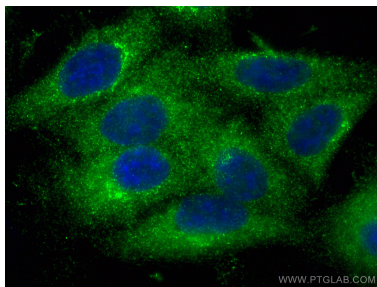
W: [ptgcn.com](http://ptgcn.com)

**This product is exclusively available under Proteintech Group brand and is not available to purchase from any other manufacturer.**

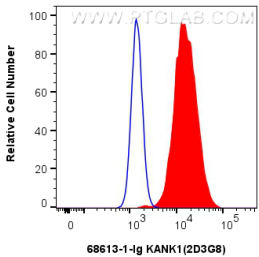
## Selected Validation Data



Various lysates were subjected to SDS PAGE followed by western blot with 68613-1-Ig (KANK1 antibody) at dilution of 1:10000 incubated at room temperature for 1.5 hours. This data was developed using the same antibody clone with 68613-1-PBS in a different storage buffer formulation.



Immunofluorescent analysis of (-20°C Ethanol) fixed HepG2 cells using KANK1 antibody (68613-1-Ig, Clone: 2D3G8 ) at dilution of 1:400 and CoraLite®488-Conjugated AffiniPure Goat Anti-Mouse IgG(H+L) (SA00013-1). This data was developed using the same antibody clone with 68613-1-PBS in a different storage buffer formulation.



1x10<sup>6</sup> HepG2 cells were intracellularly stained with 0.25 ug KANK1 Monoclonal antibody (68613-1-Ig, Clone:2D3G8) and CoraLite®488-Conjugated Goat Anti-Mouse IgG(H+L) (SA00013-1)(red), or 0.25 ug Mouse IgG1 isotype control Mouse McAb (66360-1-Ig, Clone: 1F8D3) (blue). Cells were fixed with 4% PFA and permeabilized with Flow Cytometry Perm Buffer (PF00011-C). This data was developed using the same antibody clone with 68613-1-PBS in a different storage buffer