

For Research Use Only

# PRODH Monoclonal antibody, PBS Only



Catalog Number: 68621-1-PBS

## Basic Information

<b>Catalog Number:</b> 68621-1-PBS	<b>GenBank Accession Number:</b> BC118597	<b>Purification Method:</b> Protein G purification
<b>Size:</b> 1 mg/ml	<b>GeneID (NCBI):</b> 5625	<b>CloneNo.:</b> 2C3G5
<b>Source:</b> Mouse	<b>UNIPROT ID:</b> O43272	
<b>Isotype:</b> IgG1	<b>Full Name:</b> proline dehydrogenase (oxidase) 1	
<b>Immunogen Catalog Number:</b> AG18429	<b>Calculated MW:</b> 600 aa, 68 kDa	
	<b>Observed MW:</b> 56 kDa, 66 kDa	

## Applications

**Tested Applications:**  
WB, Indirect ELISA

**Species Specificity:**  
Human, mouse, rat, rabbit, pig

## Background Information

PRODH (Proline dehydrogenase 1, mitochondrial) is also named as PIG6, HSPOX2, PRODH1, PRODH2, POX, SCZD4, TP53I6 and belongs to the proline oxidase family. It is an oxidoreductase involved in the transfer of redox potential across the mitochondrial membrane and catalyzes the rate-limiting oxidation of proline to pyrroline-5-carboxylate (P5C). High PRODH activity is sufficient to induce mitochondria-mediated apoptosis in the presence of proline. Defects in PRODH are the cause of hyperprolinemia type 1 (HP-1) and defects in PRODH are associated with susceptibility to schizophrenia type 4 (SCZD4). This protein has 3 isoforms produced by alternative splicing with the molecular mass of 68 kDa, 59 kDa and 56 kDa.

## Storage

**Storage:**  
Store at -80°C.  
**The product is shipped with ice packs. Upon receipt, store it immediately at -80°C**

**Storage Buffer:**  
PBS Only

For technical support and original validation data for this product please contact:

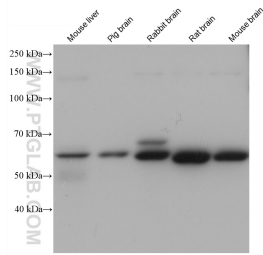
T: 4006900926

E: [Proteintech-CN@ptglab.com](mailto:Proteintech-CN@ptglab.com)

W: [ptgcn.com](http://ptgcn.com)

**This product is exclusively available under Proteintech Group brand and is not available to purchase from any other manufacturer.**

## Selected Validation Data



Various lysates were subjected to SDS PAGE followed by western blot with 68621-1-Ig (PRODH antibody) at dilution of 1:20000 incubated at room temperature for 1.5 hours. This data was developed using the same antibody clone with 68621-1-PBS in a different storage buffer formulation.