

For Research Use Only

# C22orf25 Monoclonal antibody

Catalog Number: 68625-1-Ig



## Basic Information

Catalog Number:

68625-1-Ig

Size:

1000 µg/ml

Source:

Mouse

Isotype:

IgG1

Immunogen Catalog Number:

AG27127

GenBank Accession Number:

BC041339

GeneID (NCBI):

128989

UNIPROT ID:

Q6ICL3

Full Name:

chromosome 22 open reading frame

25

Observed MW:

30-34 kDa

Purification Method:

Protein G purification

CloneNo.:

2G5B8

Recommended Dilutions:

WB 1:2000-1:10000

## Applications

Tested Applications:

WB, ELISA

Species Specificity:

Human

Positive Controls:

WB : DU 145 cells, human peripheral blood platelets, LNCaP cells, SK-BR-3 cells, HT-29 cells, HT-1376 cells, THP-1 cells, human heart tissue

## Background Information

### Storage

Storage:

Store at -20°C. Stable for one year after shipment.

Storage Buffer:

PBS with 0.02% sodium azide and 50% glycerol pH 7.3.

Aliquoting is unnecessary for -20°C storage

For technical support and original validation data for this product please contact:

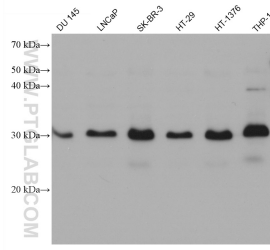
T: 4006900926

E: [Proteintech-CN@ptglab.com](mailto:Proteintech-CN@ptglab.com)

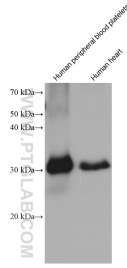
W: [ptgcn.com](http://ptgcn.com)

This product is exclusively available under Proteintech Group brand and is not available to purchase from any other manufacturer.

## Selected Validation Data



Various lysates were subjected to SDS PAGE followed by western blot with 68625-1-Ig (C22orf25 antibody) at dilution of 1:5000 incubated at room temperature for 1.5 hours.



Various lysates were subjected to SDS PAGE followed by western blot with 68625-1-Ig (C22orf25 antibody) at dilution of 1:5000 incubated at room temperature for 1.5 hours.