

For Research Use Only

PPM1F Monoclonal antibody, PBS Only



Catalog Number: 68626-1-PBS

Basic Information

Catalog Number: 68626-1-PBS	GenBank Accession Number: BC071989	Purification Method: Protein A purification
Size: 1 mg/ml	GeneID (NCBI): 9647	CloneNo.: 2A2E8
Source: Mouse	UNIPROT ID: P49593	
Isotype: IgG2a	Full Name: protein phosphatase 1F (PP2C domain containing)	
Immunogen Catalog Number: AG10316	Calculated MW: 453 aa, 50 kDa	
	Observed MW: 50 kDa	

Applications

Tested Applications:
WB, Indirect ELISA

Species Specificity:
Human

Background Information

Mg²⁺/Mn²⁺-dependent protein phosphatase 1F (PPM1F) belongs to the PP2C family of Ser/Thr protein phosphatases and is the critical enzyme responsible for dephosphorylating the threonine motif. PPM1F is ubiquitous in various tissues and organs (PMID: 26498692). High expression of PPM1F was positively associated with poor survival and tumor recurrence in patients with cancers and PPM1F might be a potential biomarker in HCC patients (PMID: 30470261).

Storage

Storage:
Store at -80°C.
The product is shipped with ice packs. Upon receipt, store it immediately at -80°C

Storage Buffer:
PBS Only

For technical support and original validation data for this product please contact:

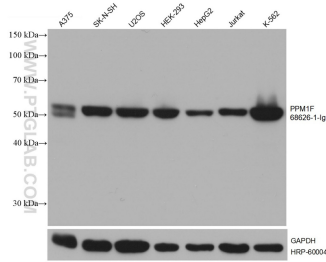
T: 4006900926

E: Proteintech-CN@ptglab.com

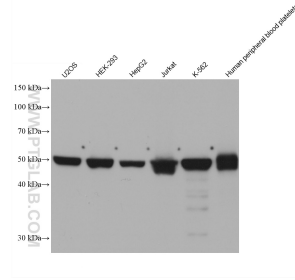
W: ptgcn.com

This product is exclusively available under Proteintech Group brand and is not available to purchase from any other manufacturer.

Selected Validation Data



Various lysates were subjected to SDS PAGE followed by western blot with 68626-1-Ig (PPM1F antibody) at dilution of 1:20000 incubated at room temperature for 1.5 hours. The membrane was stripped and reblotted with HRP-conjugated GAPDH Monoclonal antibody (HRP-60004) as loading control. This data was developed using the same antibody clone with 68626-1-PBS in a different storage buffer formulation.



Various lysates were subjected to SDS PAGE followed by western blot with 68626-1-Ig (PPM1F antibody) at dilution of 1:10000 incubated at room temperature for 1.5 hours. This data was developed using the same antibody clone with 68626-1-PBS in a different storage buffer formulation.