

For Research Use Only

STAM Monoclonal antibody

Catalog Number: 68628-1-Ig



Basic Information

Catalog Number:

68628-1-Ig

Size:

1000 µg/ml

Source:

Mouse

Isotype:

IgG2b

Immunogen Catalog Number:

AG33192

GenBank Accession Number:

BC030586

GeneID (NCBI):

8027

UNIPROT ID:

Q92783

Full Name:

signal transducing adaptor molecule
(SH3 domain and ITAM motif) 1

Calculated MW:

59 kDa

Observed MW:

70 kDa

Purification Method:

Protein A purification

CloneNo.:

1F5C2

Recommended Dilutions:

WB 1:5000-1:50000

Applications

Tested Applications:

WB, ELISA

Species Specificity:

Human, mouse, rat

Positive Controls:

WB : HCT 116 cells, RAW 264.7 cells, HeLa cells, LNCaP cells, HepG2 cells, Jurkat cells, K-562 cells

Background Information

STAM, also named as STAM1, belongs to the STAM family. It is involved in intracellular signal transduction mediated by cytokines and growth factors. Upon IL-2 and GM-CSF stimulation, it plays a role in signaling leading to DNA synthesis and MYC induction. STAM may also play a role in T-cell development. It is involved in down-regulation of receptor tyrosine kinase via multivesicular body (MVBs). Together with HRS, STAM forms ESCRT-0. STAM was originally identified as an adaptor protein involved in cytokine signaling.(PMID:20505072)

Storage

Storage:

Store at -20°C. Stable for one year after shipment.

Storage Buffer:

PBS with 0.02% sodium azide and 50% glycerol pH 7.3.

Aliquoting is unnecessary for -20°C storage

For technical support and original validation data for this product please contact:

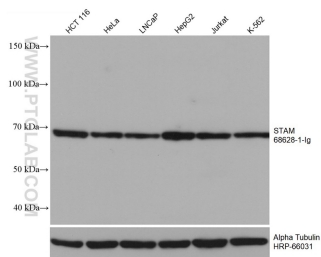
T: 4006900926

E: Proteintech-CN@ptglab.com

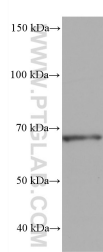
W: ptgcn.com

This product is exclusively available under Proteintech Group brand and is not available to purchase from any other manufacturer.

Selected Validation Data



Various lysates were subjected to SDS PAGE followed by western blot with 68628-1-Ig (STAM antibody) at dilution of 1:10000 incubated at room temperature for 1.5 hours. The membrane was stripped and reblotted with HRP-conjugated Alpha Tubulin Monoclonal antibody (HRP-66031) as loading control.



RAW 264.7 cells were subjected to SDS PAGE followed by western blot with 68628-1-Ig (STAM antibody) at dilution of 1:10000 incubated at room temperature for 1.5 hours.