

For Research Use Only

STAM Monoclonal antibody, PBS Only



Catalog Number: 68628-1-PBS

Basic Information

Catalog Number:

68628-1-PBS

Size:

1 mg/ml

Source:

Mouse

Isotype:

IgG2b

Immunogen Catalog Number:

AG33192

GenBank Accession Number:

BC030586

GeneID (NCBI):

8027

UNIPROT ID:

Q92783

Full Name:

signal transducing adaptor molecule
(SH3 domain and ITAM motif) 1

Calculated MW:

59 kDa

Observed MW:

70 kDa

Purification Method:

Protein A purification

CloneNo.:

1F5C2

Applications

Tested Applications:

WB, Indirect ELISA

Species Specificity:

Human, mouse, rat

Background Information

STAM, also named as STAM1, belongs to the STAM family. It is involved in intracellular signal transduction mediated by cytokines and growth factors. Upon IL-2 and GM-CSL stimulation, it plays a role in signaling leading to DNA synthesis and MYC induction. STAM may also play a role in T-cell development. It is involved in down-regulation of receptor tyrosine kinase via multivesicular body (MVBs). Together with HRS, STAM forms ESCRT-0. STAM was originally identified as an adaptor protein involved in cytokine signaling. (PMID:20505072)

Storage

Storage:

Store at -80°C.

Storage Buffer:

PBS Only

For technical support and original validation data for this product please contact:

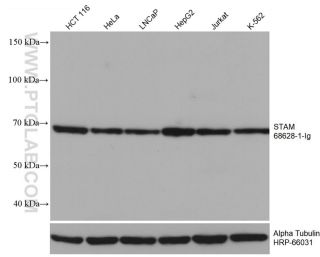
T: 4006900926

E: Proteintech-CN@ptglab.com

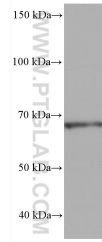
W: ptgcn.com

This product is exclusively available under Proteintech Group brand and is not available to purchase from any other manufacturer.

Selected Validation Data



Various lysates were subjected to SDS PAGE followed by western blot with 68628-1-Ig (STAM antibody) at dilution of 1:10000 incubated at room temperature for 1.5 hours. The membrane was stripped and reblotted with HRP-conjugated Alpha Tubulin Monoclonal antibody (HRP-66031) as loading control. This data was developed using the same antibody clone with 68628-1-PBS in a different storage buffer formulation.



RAW 264.7 cells were subjected to SDS PAGE followed by western blot with 68628-1-Ig (STAM antibody) at dilution of 1:10000 incubated at room temperature for 1.5 hours. This data was developed using the same antibody clone with 68628-1-PBS in a different storage buffer formulation.