

For Research Use Only

# golgin 97 Monoclonal antibody, PBS Only



Catalog Number: 68648-1-PBS

## Basic Information

<b>Catalog Number:</b> 68648-1-PBS	<b>GenBank Accession Number:</b> BC032853	<b>Purification Method:</b> Protein A purification
<b>Size:</b> 1 mg/ml	<b>GeneID (NCBI):</b> 2800	<b>CloneNo.:</b> 2A5E4
<b>Source:</b> Mouse	<b>UNIPROT ID:</b> Q92805	
<b>Isotype:</b> IgG2a	<b>Full Name:</b> golgi autoantigen, golgin subfamily a, 1	
<b>Immunogen Catalog Number:</b> AG33790	<b>Calculated MW:</b> 767 aa, 88 kDa	
	<b>Observed MW:</b> 97 kDa	

## Applications

**Tested Applications:**  
WB, IF, Indirect ELISA

**Species Specificity:**  
Human

## Background Information

Golgin subfamily A member 1 is a protein that in humans is encoded by the GOLGA1 gene. GOLGA1 has been shown to interact with ARL1. GOLGA1 is associated with Sjogren's syndrome. The MW of this protein is 97 kDa. IF result shows strong Gogli staining.

## Storage

**Storage:**  
Store at -80°C.

**Storage Buffer:**  
PBS Only

For technical support and original validation data for this product please contact:

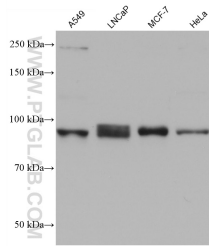
T: 4006900926

E: [Proteintech-CN@ptglab.com](mailto:Proteintech-CN@ptglab.com)

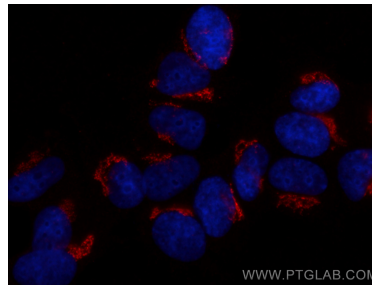
W: [ptgcn.com](http://ptgcn.com)

This product is exclusively available under Proteintech Group brand and is not available to purchase from any other manufacturer.

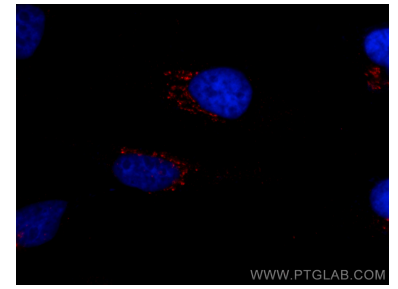
## Selected Validation Data



Various lysates were subjected to SDS PAGE followed by western blot with 68648-1-Ig (golgin 97 antibody) at dilution of 1:5000 incubated at room temperature for 1.5 hours. This data was developed using the same antibody clone with 68648-1-PBS in a different storage buffer formulation.



Immunofluorescent analysis of (4% PFA) fixed MCF-7 cells using golgin 97 antibody (68648-1-Ig, Clone: 2A5E4 ) at dilution of 1:0 and Multi-rAb CoraLite ® Plus 594-Goat Anti-Mouse Recombinant Secondary Antibody (H+L) (RGAM004). This data was developed using the same antibody clone with 68648-1-PBS in a different storage buffer formulation.



Immunofluorescent analysis of (4% PFA) fixed HeLa cells using golgin 97 antibody (68648-1-Ig, Clone: 2A5E4 ) at dilution of 1:0 and Multi-rAb CoraLite ® Plus 594-Goat Anti-Mouse Recombinant Secondary Antibody (H+L) (RGAM004). This data was developed using the same antibody clone with 68648-1-PBS in a different storage buffer formulation.