

For Research Use Only

SORLA Monoclonal antibody

Catalog Number: 68651-1-Ig



Basic Information

Catalog Number:

68651-1-Ig

Size:

1000 ug/ml

Source:

Mouse

Isotype:

IgG1

Immunogen Catalog Number:

AG18445

GenBank Accession Number:

BC137171

GeneID (NCBI):

6653

UNIPROT ID:

Q92673

Full Name:

sortilin-related receptor, L(DLR class)

A repeats-containing

Calculated MW:

2214 aa, 248 kDa

Observed MW:

300 kDa

Purification Method:

Protein G purification

CloneNo.:

2E7D9

Recommended Dilutions:

WB 1:1000-1:4000

IF-P 1:200-1:800

Applications

Tested Applications:

WB, IF-P, ELISA

Species Specificity:

human

Positive Controls:

WB : LNCaP cells,

IF-P : mouse cerebellum tissue,

Background Information

SorLA also known as SorL1 or LR11, is a multiligand receptor belonging to the LDL receptor superfamily. It is also a member of vacuolar protein sorting-10 (Vps10) family and is enriched in the brain. SorLA acts as a sorting receptor for APP and prevents amyloidogenic processing of APP. Downregulation of SorLA has been found in patients with sporadic Alzheimer disease (AD). Currently SorLA has emerged as a potential target for AD therapy. (25404298)

Storage

Storage:

Store at -20°C. Stable for one year after shipment.

Storage Buffer:

PBS with 0.02% sodium azide and 50% glycerol pH 7.3.

Aliquoting is unnecessary for -20°C storage

For technical support and original validation data for this product please contact:

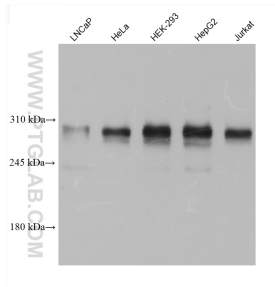
T: 4006900926

E: Proteintech-CN@ptglab.com

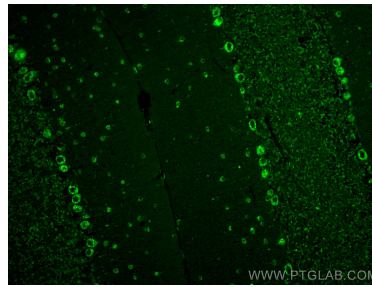
W: ptgcn.com

This product is exclusively available under Proteintech Group brand and is not available to purchase from any other manufacturer.

Selected Validation Data



Various lysates were subjected to SDS PAGE followed by western blot with 68651-1-Ig (SORL1 antibody) at dilution of 1:2000 incubated at room temperature for 1.5 hours.



Immunofluorescent analysis of (4% PFA) fixed paraffin-embedded mouse cerebellum tissue using SORL1 antibody (68651-1-Ig, Clone: 2E7D9) at dilution of 1:400 and CoraLite®488-Conjugated AffiniPure Goat Anti-Mouse IgG(H+L) (SA00013-1). Heat mediated antigen retrieval with Tris-EDTA buffer (pH 9.0).