

For Research Use Only

# SORLA Monoclonal antibody, PBS Only

Catalog Number: 68651-1-PBS



## Basic Information

Catalog Number:

68651-1-PBS

Size:

1 mg/ml

Source:

Mouse

Isotype:

IgG1

Immunogen Catalog Number:

AG18445

GenBank Accession Number:

BC137171

GeneID (NCBI):

6653

UNIPROT ID:

Q92673

Full Name:

sortilin-related receptor, L(DLR class)

A repeats-containing

Calculated MW:

2214 aa, 248 kDa

Observed MW:

300 kDa

Purification Method:

Protein G purification

CloneNo.:

2E7D9

## Applications

Tested Applications:

WB, IF-P, Indirect ELISA

Species Specificity:

human

## Background Information

SorLA also known as SorL1 or LR11, is a multiligand receptor belonging to the LDL receptor superfamily. It is also a member of vacuolar protein sorting-10 (Vps10) family and is enriched in the brain. SorLA acts as a sorting receptor for APP and prevents amyloidogenic processing of APP. Downregulation of SorLA has been found in patients with sporadic Alzheimer disease (AD). Currently SorLA has emerged as a potential target for AD therapy. (25404298)

## Storage

Storage:

Store at -80°C.

**The product is shipped with ice packs. Upon receipt, store it immediately at -80°C**

Storage Buffer:

PBS Only

For technical support and original validation data for this product please contact:

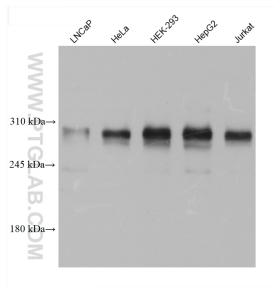
T: 4006900926

E: [Proteintech-CN@ptglab.com](mailto:Proteintech-CN@ptglab.com)

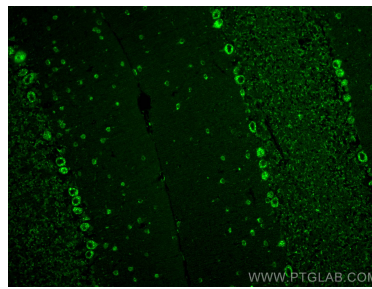
W: [ptgcn.com](http://ptgcn.com)

**This product is exclusively available under Proteintech Group brand and is not available to purchase from any other manufacturer.**

## Selected Validation Data



Various lysates were subjected to SDS PAGE followed by western blot with 68651-1-Ig (SORL1 antibody) at dilution of 1:2000 incubated at room temperature for 1.5 hours. This data was developed using the same antibody clone with 68651-1-PBS in a different storage buffer formulation.



Immunofluorescent analysis of (4% PFA) fixed paraffin-embedded mouse cerebellum tissue using SORL1 antibody (68651-1-Ig, Clone: 2E7D9) at dilution of 1:400 and CoraLite®488-Conjugated AffiniPure Goat Anti-Mouse IgG(H+L) (SA00013-1). Heat mediated antigen retrieval with Tris-EDTA buffer (pH 9.0). This data was developed using the same antibody clone with 68651-1-PBS in a different storage buffer formulation.