

For Research Use Only

RS1 Monoclonal antibody, PBS Only

Catalog Number: 68654-1-PBS



Basic Information

Catalog Number: 68654-1-PBS	GenBank Accession Number: BC141638	Purification Method: Protein G purification
Size: 1 mg/ml	GeneID (NCBI): 6247	CloneNo.: 1A2D4
Source: Mouse	UNIPROT ID: O15537	
Isotype: IgG1	Full Name: retinoschisin 1	
Immunogen Catalog Number: AG18885	Calculated MW: 26 kDa	
	Observed MW: 26 kDa	

Applications

Tested Applications:
WB, Indirect ELISA

Species Specificity:
Human, rat, mouse, rabbit

Background Information

RS1 is also named as XLR51. RS1 can bind negatively charged membrane lipids, such as phosphatidylserine and phosphoinositides. RS1 is required for normal structure and function of the retina (PMID:19093009). It may play a role in cell-cell adhesion processes in the retina (PMID:27114531). RS1 is high expression in the retina (at protein level) (PMID:10915776, PMID:9326935). It is detected in the inner segment of the photoreceptors, the inner nuclear layer, the inner plexiform layer and the ganglion cell layer. At the macula, it is expressed in both the outer and inner nuclear layers and in the inner plexiform layer (PMID:10915776, PMID:10915776). And RS1 is undetectable in the inner plexiform layers and the inner nuclear layer (PMID:10915776)

Storage

Storage:
Store at -80°C.
The product is shipped with ice packs. Upon receipt, store it immediately at -80°C

Storage Buffer:
PBS Only

For technical support and original validation data for this product please contact:

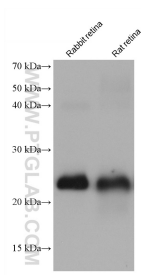
T: 4006900926

E: Proteintech-CN@ptglab.com

W: ptgcn.com

This product is exclusively available under Proteintech Group brand and is not available to purchase from any other manufacturer.

Selected Validation Data



Various lysates were subjected to SDS PAGE followed by western blot with 68654-1-Ig (RS1 antibody) at dilution of 1:10000 incubated at room temperature for 1.5 hours. This data was developed using the same antibody clone with 68654-1-PBS in a different storage buffer formulation.