

For Research Use Only

# NPTX2 Monoclonal antibody

Catalog Number: 68709-1-Ig



## Basic Information

<b>Catalog Number:</b> 68709-1-Ig	<b>GenBank Accession Number:</b> BC009924	<b>Purification Method:</b> Protein G purification
<b>Size:</b> 1000 µg/ml	<b>GeneID (NCBI):</b> 4885	<b>CloneNo.:</b> 2H8D8
<b>Source:</b> Mouse	<b>UNIPROT ID:</b> P47972	<b>Recommended Dilutions:</b> WB 1:5000-1:50000
<b>Isotype:</b> IgG1	<b>Full Name:</b> neuronal pentraxin II	
<b>Immunogen Catalog Number:</b> AG33808	<b>Calculated MW:</b> 47 kDa	
	<b>Observed MW:</b> 50-55 kDa	

## Applications

<b>Tested Applications:</b> WB, ELISA	<b>Positive Controls:</b> WB : pig pituitary gland tissue, pig brain tissue, rabbit brain tissue, rat brain tissue, mouse brain tissue
<b>Species Specificity:</b> Human, mouse, rat, pig, rabbit	

## Background Information

Neuronal pentraxins constitute a family of proteins that are homologous to C-reactive protein (CRP) and serum amyloid P component (SAP), including NPTX1, NPTX2, and the neuronal pentraxin receptor (NPTXR). NPTX2, also known as NARP (neuronal activity-regulated pentaxin), is a secreted protein involved in excitatory synapse formation. It also plays a role in the clustering of alpha-amino-3-hydroxy-5-methyl-4-isoxazolepropionic acid (AMPA)-type glutamate receptors at established synapses, resulting in non-apoptotic cell death of dopaminergic nerve cells. NPTX2 is highly up-regulated in Parkinson's disease (PD), suggesting it may be involved in the pathology of PD. (PMID: 12895424; 17987278; 10748068)

## Storage

**Storage:**  
Store at -20°C. Stable for one year after shipment.  
**Storage Buffer:**  
PBS with 0.02% sodium azide and 50% glycerol pH 7.3.  
Aliquoting is unnecessary for -20°C storage

For technical support and original validation data for this product please contact:

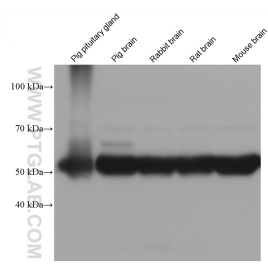
T: 4006900926

E: [Proteintech-CN@ptglab.com](mailto:Proteintech-CN@ptglab.com)

W: [ptgcn.com](http://ptgcn.com)

This product is exclusively available under Proteintech Group brand and is not available to purchase from any other manufacturer.

## Selected Validation Data



Various lysates were subjected to SDS PAGE followed by western blot with 68709-1-Ig (NPTX2 antibody) at dilution of 1:10000 incubated at room temperature for 1.5 hours.