

For Research Use Only

# MTF2 Monoclonal antibody

Catalog Number: 68713-1-Ig



## Basic Information

Catalog Number:

68713-1-Ig

Size:

1000 µg/ml

Source:

Mouse

Isotype:

IgG2b

Immunogen Catalog Number:

AG9384

GenBank Accession Number:

BC010013

GeneID (NCBI):

22823

UNIPROT ID:

Q9Y483

Full Name:

metal response element binding  
transcription factor 2

Calculated MW:

536 aa, 61 kDa

Observed MW:

55 kDa, 60 kDa, 75 kDa

Purification Method:

Protein A purification

CloneNo.:

2E5D5

Recommended Dilutions:

WB 1:5000-1:50000

## Applications

Tested Applications:

WB, ELISA

Species Specificity:

Human, Rat, Rabbit, Mouse

Positive Controls:

WB : HeLa cells, HEK-293 cells, HepG2 cells, Jurkat cells, K-562 cells, HSC-T6 cells, NIH/3T3 cells, Rabbit testis tissue, Mouse testis tissue

## Background Information

MTF2, also named as Metal-response element-binding transcription factor 2, is a 593 amino acid protein. It exists several isoforms and the range of the molecular weight of isoforms are about 55-60 kDa and 29 kDa. MTF2 contains 2 PHD-type zinc fingers and belongs to the Polycomblike family. MTF2 acts by binding to H3K36me3, a mark for transcriptional activation, and recruiting the PRC2 complex, leading to enhance PRC2 H3K27me3 methylation activity and regulates the transcriptional networks during embryonic stem cell self-renewal and differentiation.

## Storage

Storage:

Store at -20°C. Stable for one year after shipment.

Storage Buffer:

PBS with 0.02% sodium azide and 50% glycerol pH 7.3.

Aliquoting is unnecessary for -20°C storage

For technical support and original validation data for this product please contact:

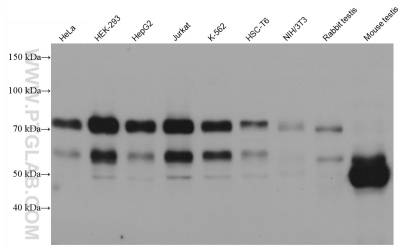
T: 4006900926

E: [Proteintech-CN@ptglab.com](mailto:Proteintech-CN@ptglab.com)

W: [ptgcn.com](http://ptgcn.com)

This product is exclusively available under Proteintech Group brand and is not available to purchase from any other manufacturer.

## Selected Validation Data



Various lysates were subjected to SDS PAGE followed by western blot with 68713-1-Ig (MTF2 antibody) at dilution of 1:10000 incubated at room temperature for 1.5 hours.