

For Research Use Only

CEP135 Monoclonal antibody

Catalog Number: 68715-1-Ig



Basic Information

Catalog Number: 68715-1-Ig	GenBank Accession Number: BC136535	Purification Method: Protein G purification
Size: 1000 µg/ml	GeneID (NCBI): 9662	CloneNo.: 3C4B7
Source: Mouse	UNIPROT ID: Q66GS9	Recommended Dilutions: WB 1:5000-1:50000
Isotype: IgG1	Full Name: centrosomal protein 135kDa	
Immunogen Catalog Number: AG19122	Calculated MW: 1140 aa, 134 kDa	
	Observed MW: 135 kDa	

Applications

Tested Applications: WB, ELISA	Positive Controls: WB : A549 cells, LNCaP cells, HeLa cells, HEK-293 cells, Jurkat cells, K-562 cells, U2OS cells
Species Specificity: Human	

Background Information

CEP135 is a 135 kDa centrosomal protein that is present in a wide range of organisms. CEP135 is located at the centrosome throughout the cell cycle, and localization is independent of the microtubule network. It distributes throughout the centrosomal area in association with the electron-dense material surrounding centrioles.

Storage

Storage:
Store at -20°C. Stable for one year after shipment.
Storage Buffer:
PBS with 0.02% sodium azide and 50% glycerol pH 7.3.
Aliquoting is unnecessary for -20°C storage

For technical support and original validation data for this product please contact:

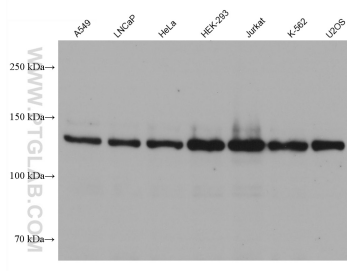
T: 4006900926

E: Proteintech-CN@ptglab.com

W: ptgcn.com

This product is exclusively available under Proteintech Group brand and is not available to purchase from any other manufacturer.

Selected Validation Data



Various lysates were subjected to SDS PAGE followed by western blot with 68715-1-Ig (CEP135 antibody) at dilution of 1:10000 incubated at room temperature for 1.5 hours.