

For Research Use Only

# ALPL Monoclonal antibody, PBS Only

Catalog Number: 68719-1-PBS



## Basic Information

<b>Catalog Number:</b> 68719-1-PBS	<b>GenBank Accession Number:</b> BC021289	<b>Purification Method:</b> Protein A purification
<b>Size:</b> 1 mg/ml	<b>GeneID (NCBI):</b> 249	<b>CloneNo.:</b> 2E3C1
<b>Source:</b> Mouse	<b>UNIPROT ID:</b> P05186	
<b>Isotype:</b> IgG2a	<b>Full Name:</b> alkaline phosphatase, liver/bone/kidney	
<b>Immunogen Catalog Number:</b> AG33678	<b>Calculated MW:</b> 57 kDa	
	<b>Observed MW:</b> 80 kDa	

## Applications

**Tested Applications:**  
WB, Indirect ELISA

**Species Specificity:**  
Human, pig, rabbit

## Background Information

There are at least four distinct but related alkaline phosphatases: intestinal, placental, placental-like, and liver/bone/kidney (tissue non-specific). The product of this gene is a membrane bound glycosylated enzyme that is not expressed in any particular tissue and is, therefore, referred to as the tissue-nonspecific form of the enzyme. ALPL (Alkaline phosphatase, tissue-nonspecific isozyme) is also named as AP-TNAP, TNSALP and belongs to the alkaline phosphatase family. It can exist as a homodimer with the molecular weight of 140 kDa (PMID:18724009). ALPL was synthesized as a 66-kDa endo-b-N-acetylglucosaminidase H (Endo H)-sensitive form, and processed to an 80-kDa mature form, which is anchored to the plasma membrane via glycosylphosphatidylinositol (GPI) (PMID:10839996).

## Storage

**Storage:**  
Store at -80°C.

**Storage Buffer:**  
PBS Only

For technical support and original validation data for this product please contact:

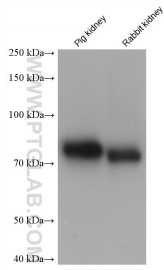
T: 4006900926

E: [Proteintech-CN@ptglab.com](mailto:Proteintech-CN@ptglab.com)

W: [ptgcn.com](http://ptgcn.com)

This product is exclusively available under Proteintech Group brand and is not available to purchase from any other manufacturer.

## Selected Validation Data



Various lysates were subjected to SDS PAGE followed by western blot with 68719-1-Ig (ALPL antibody) at dilution of 1:10000 incubated at room temperature for 1.5 hours. This data was developed using the same antibody clone with 68719-1-PBS in a different storage buffer formulation.