

For Research Use Only

# LDB1 Monoclonal antibody

Catalog Number: 68721-1-Ig



## Basic Information

<b>Catalog Number:</b> 68721-1-Ig	<b>GenBank Accession Number:</b> BC000482	<b>Purification Method:</b> Protein G purification
<b>Size:</b> 1000 µg/ml	<b>GeneID (NCBI):</b> 8861	<b>CloneNo.:</b> 2F11C3
<b>Source:</b> Mouse	<b>UNIPROT ID:</b> Q86U70	<b>Recommended Dilutions:</b> WB 1:5000-1:50000
<b>Isotype:</b> IgG1	<b>Full Name:</b> LIM domain binding 1	
<b>Immunogen Catalog Number:</b> AG34563	<b>Calculated MW:</b> 46 kDa	
	<b>Observed MW:</b> 46 kDa	

## Applications

<b>Tested Applications:</b> WB, ELISA	<b>Positive Controls:</b> WB : LNCaP cells, HSC-T6 cells, NIH/3T3 cells, HeLa cells, HEK-293 cells
<b>Species Specificity:</b> Human, mouse, rat	

## Background Information

LIM domain-binding protein 1 (LDB1), also known as Carboxyl-terminal LIM domain-binding protein 2 (CLIM2), binds to the LIM domain of a wide variety of LIM domain-containing transcription factors. LDB1 may regulate the transcriptional activity of LIM-containing proteins by determining specific partner interactions. It plays a role in the development of interneurons and motor neurons in cooperation with LHX3 and ISL1. LDB1 acts synergistically with LHX1/LIM1 in axis formation and activation of gene expression. It also acts with LMO2 in the regulation of red blood cell development, maintaining erythroid precursors in an immature state. LDB1 strongly interacts with the LIM2 domain of LMX1A to form homodimer. LDB1 protein is expressed in a wide range of adult tissues including brain, heart, skeletal muscle, colon, thymus, spleen, kidney, liver, small intestine, lung and peripheral blood leukocytes.

## Storage

**Storage:**  
Store at -20°C. Stable for one year after shipment.  
**Storage Buffer:**  
PBS with 0.02% sodium azide and 50% glycerol pH 7.3.  
Aliquoting is unnecessary for -20°C storage

For technical support and original validation data for this product please contact:

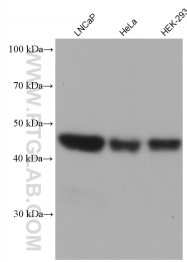
T: 4006900926

E: [Proteintech-CN@ptglab.com](mailto:Proteintech-CN@ptglab.com)

W: [ptgcn.com](http://ptgcn.com)

**This product is exclusively available under Proteintech Group brand and is not available to purchase from any other manufacturer.**

## Selected Validation Data



Various lysates were subjected to SDS PAGE followed by western blot with 68721-1-Ig (LDB1 antibody) at dilution of 1:20000 incubated at room temperature for 1.5 hours.