

For Research Use Only

EMC7/C15orf24 (Human Specific) Monoclonal antibody



Catalog Number: 68722-1-Ig

Basic Information

Catalog Number:

68722-1-Ig

Size:

1000 µg/ml

Source:

Mouse

Isotype:

IgG1

Immunogen Catalog Number:

AG26813

GenBank Accession Number:

BC104934

GeneID (NCBI):

56851

UNIPROT ID:

Q9NPA0

Full Name:

chromosome 15 open reading frame

24

Observed MW:

20-26 kDa

Purification Method:

Protein G purification

CloneNo.:

1D7A6

Recommended Dilutions:

WB 1:5000-1:50000

Applications

Tested Applications:

WB, ELISA

Species Specificity:

Human

Positive Controls:

WB : HeLa cells, LNCaP cells, MCF-7 cells, HEK-293 cells, Jurkat cells, K-562 cells, U2OS cells

Background Information

The mammalian ER membrane complex (EMC) is composed of 10 subunits, EMC 1-10. Endoplasmic reticulum membrane protein complex subunit 7 (EMC7, also named C15orf24) is part of the endoplasmic reticulum membrane protein complex (EMC) that enables the energy-independent insertion into endoplasmic reticulum membranes of newly synthesized membrane proteins.

Storage

Storage:

Store at -20°C. Stable for one year after shipment.

Storage Buffer:

PBS with 0.02% sodium azide and 50% glycerol pH 7.3.

Aliquoting is unnecessary for -20°C storage

For technical support and original validation data for this product please contact:

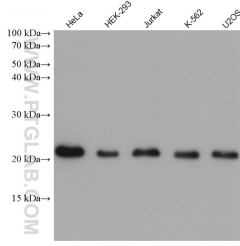
T: 4006900926

E: Proteintech-CN@ptglab.com

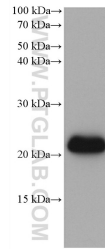
W: ptgcn.com

This product is exclusively available under Proteintech Group brand and is not available to purchase from any other manufacturer.

Selected Validation Data



Various lysates were subjected to SDS PAGE followed by western blot with 68722-1-Ig (C15orf24 antibody) at dilution of 1:10000 incubated at room temperature for 1.5 hours.



LNCaP cells were subjected to SDS PAGE followed by western blot with 68722-1-Ig (EMC7/C15orf24 antibody) at dilution of 1:10000 incubated at room temperature for 1.5 hours.