

For Research Use Only

AP1M1 Monoclonal antibody

Catalog Number: 68726-1-Ig



Basic Information

Catalog Number: 68726-1-Ig	GenBank Accession Number: BC017469	Purification Method: Protein A purification
Size: 1000 µg/ml	GeneID (NCBI): 8907	CloneNo.: 1E9A11
Source: Mouse	UNIPROT ID: Q9BXS5	Recommended Dilutions: WB 1:5000-1:50000
Isotype: IgG1	Full Name: adaptor-related protein complex 1, mu 1 subunit	
Immunogen Catalog Number: AG25303	Calculated MW: 423 aa, 49 kDa	
	Observed MW: 47-49 kDa	

Applications

Tested Applications: WB, ELISA	Positive Controls:
Species Specificity: Human, mouse	WB: MDA-MB-231 cells, A375 cells, NIH/3T3 cells, human placenta tissue, LNCaP cells, HEK-293 cells, Jurkat cells

Background Information

AP1M1, also named as CLTNM, Mu-adaptin 1 and Clathrin coat assembly protein AP47, belongs to the adaptor complexes medium subunit family. It is a subunit of clathrin-associated adaptor protein complex 1 that plays a role in protein sorting in the trans-Golgi network (TGN) and endosomes. The AP complexes mediate the recruitment of clathrin to membranes and the recognition of sorting signals within the cytosolic tails of transmembrane cargo molecules.

Storage

Storage:
Store at -20°C. Stable for one year after shipment.
Storage Buffer:
PBS with 0.02% sodium azide and 50% glycerol pH 7.3.
Aliquoting is unnecessary for -20°C storage

For technical support and original validation data for this product please contact:

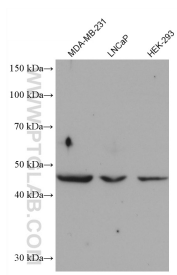
T: 4006900926

E: Proteintech-CN@ptglab.com

W: ptgcn.com

This product is exclusively available under Proteintech Group brand and is not available to purchase from any other manufacturer.

Selected Validation Data



Various lysates were subjected to SDS PAGE followed by western blot with 68726-1-Ig (AP1M1 antibody) at dilution of 1:10000 incubated at room temperature for 1.5 hours.