

For Research Use Only

ATP1A1 Monoclonal antibody

Catalog Number: 68735-2-Ig



Basic Information

Catalog Number: 68735-2-Ig	GenBank Accession Number: BC050359	Purification Method: Protein A purification
Size: 1000 µg/ml	GeneID (NCBI): 476	CloneNo.: 1E9B7
Source: Mouse	ENSEMBL Gene ID: ENSG00000163399	Recommended Dilutions: WB 1:5000-1:50000 IHC 1:1000-1:4000 IF 1:400-1:1600
Isotype: IgG2a	UNIPROT ID: P05023	
Immunogen Catalog Number: AG5990	Full Name: ATPase, Na ⁺ /K ⁺ transporting, alpha 1 polypeptide	
	Calculated MW: 113 kDa	
	Observed MW: 100 kDa	

Applications

Tested Applications: WB, IF/ICC, IHC, ELISA	Positive Controls: WB : unboiled A431 cells, unboiled HepG2 cells IHC : mouse kidney tissue, IF : HEK-293 cells,
Species Specificity: Human	
Note-IHC: suggested antigen retrieval with TE buffer pH 9.0; (*) Alternatively, antigen retrieval may be performed with citrate buffer pH 6.0	

Background Information

ATP1A1 is the catalytic component of Na⁺/K⁺-ATPase which is a membrane bound enzyme primarily involved in generation of Na⁺ and K⁺ gradients across plasma membranes and in determination of cytoplasmic Na⁺ levels. ATP1A1 is a ubiquitously expressed membrane protein and often used as the marker or internal control for plasma membrane protein. For optimal WB detection of this membrane protein, we recommend to avoid boiling the sample after lysis.

Storage

Storage:
Store at -20°C. Stable for one year after shipment.
Storage Buffer:
PBS with 0.02% sodium azide and 50% glycerol pH 7.3.
Aliquoting is unnecessary for -20°C storage

For technical support and original validation data for this product please contact:

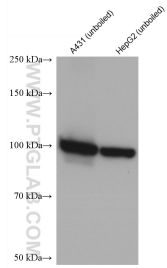
T: 4006900926

E: Proteintech-CN@ptglab.com

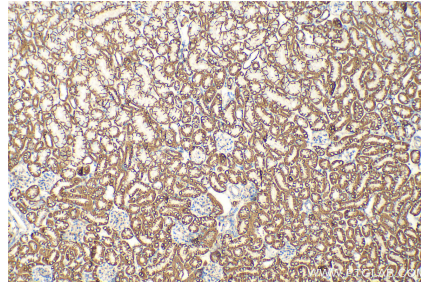
W: ptgcn.com

This product is exclusively available under Proteintech Group brand and is not available to purchase from any other manufacturer.

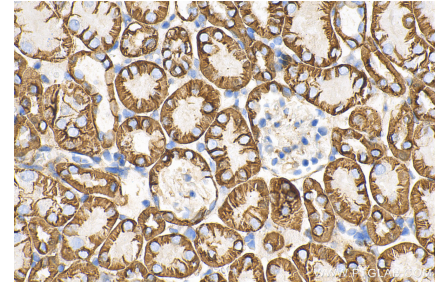
Selected Validation Data



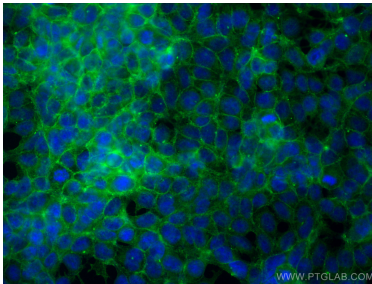
Various lysates were subjected to SDS PAGE followed by western blot with 68735-2-Ig (ATP1A1 antibody) at dilution of 1:10000 incubated at room temperature for 1.5 hours.



Immunohistochemical analysis of paraffin-embedded mouse kidney tissue slide using 68735-2-Ig (ATP1A1 antibody) at dilution of 1:2000 (under 10x lens). Heat mediated antigen retrieval with Tris-EDTA buffer (pH 9.0).



Immunohistochemical analysis of paraffin-embedded mouse kidney tissue slide using 68735-2-Ig (ATP1A1 antibody) at dilution of 1:2000 (under 40x lens). Heat mediated antigen retrieval with Tris-EDTA buffer (pH 9.0).



Immunofluorescent analysis of (-20°C Ethanol) fixed HEK-293 cells using ATP1A1 antibody (68735-2-Ig, Clone: 1E9B7) at dilution of 1:800 and CoraLite®488-Conjugated AffiniPure Goat Anti-Mouse IgG(H+L) (SA00013-1).