

For Research Use Only

SLC35A1 Monoclonal antibody, PBS Only (Detector)



Catalog Number: 68788-2-PBS

Basic Information

Catalog Number:

68788-2-PBS

Size:

1mg/ml

Source:

Mouse

Isotype:

IgG1

Immunogen Catalog Number:

AG9524

GenBank Accession Number:

BC017807

GeneID (NCBI):

10559

UNIPROT ID:

P78382

Full Name:

solute carrier family 35 (CMP-sialic acid transporter), member A1

Calculated MW:

337 aa, 37 kDa

Purification Method:

Protein G Magarose purification

CloneNo.:

1D5C8

Applications

Tested Applications:

Indirect ELISA, Cytometric bead array

Species Specificity:

Human

Background Information

Storage

Storage:

Store at -80°C.

The product is shipped with ice packs. Upon receipt, store it immediately at -80°C

Storage Buffer:

PBS Only

For technical support and original validation data for this product please contact:

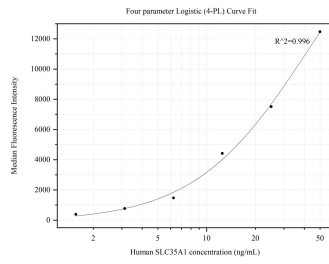
T: 4006900926

E: Proteintech-CN@ptglab.com

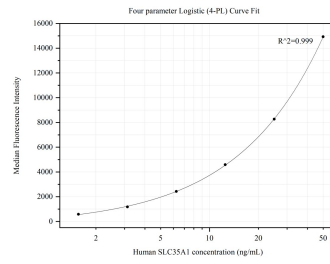
W: ptgcn.com

This product is exclusively available under Proteintech Group brand and is not available to purchase from any other manufacturer.

Selected Validation Data



Cytometric bead array standard curve of MP50154-1, SLC35A1 Monoclonal Matched Antibody Pair, PBS Only. Capture antibody: 68788-1-PBS. Detection antibody: 68788-2-PBS. Standard:Ag9524. Range: 1.563-50 ng/mL



Cytometric bead array standard curve of MP50154-2, SLC35A1 Monoclonal Matched Antibody Pair, PBS Only. Capture antibody: 68788-3-PBS. Detection antibody: 68788-2-PBS. Standard:Ag9524. Range: 1.563-50 ng/mL