

For Research Use Only

# Ezrin Monoclonal antibody, PBS Only (Detector)

Catalog Number: 68789-2-PBS



## Basic Information

Catalog Number:

68789-2-PBS

Size:

1mg/ml

Source:

Mouse

Isotype:

IgG1

GenBank Accession Number:

BC013903

GeneID (NCBI):

7430

ENSEMBL Gene ID:

ENSG00000092820

UNIPROT ID:

P15311

Full Name:

ezrin

Calculated MW:

69 kDa

Purification Method:

Protein G Magarose purification

CloneNo.:

1G12E9

## Applications

Tested Applications:

Cytometric bead array, Indirect ELISA, Sample test

Species Specificity:

human

## Background Information

### Storage

Storage:

Store at -80°C.

The product is shipped with ice packs. Upon receipt, store it immediately at -80°C

Storage Buffer:

PBS Only

For technical support and original validation data for this product please contact:

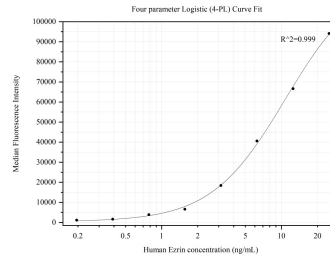
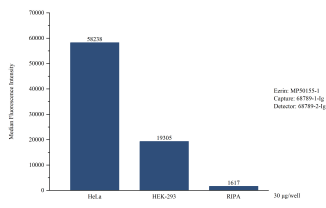
T: 4006900926

E: [Proteintech-CN@ptglab.com](mailto:Proteintech-CN@ptglab.com)

W: [ptgcn.com](http://ptgcn.com)

This product is exclusively available under Proteintech Group brand and is not available to purchase from any other manufacturer.

## Selected Validation Data



Cytometric bead array in cell lysate using MP50155-1, Ezrin Monoclonal Matched Antibody Pair, PBS Only. Capture antibody: 68789-1-PBS. Detection antibody: 68789-2-PBS. Cell lysate: HeLa, HEK293. RIPA lysis buffer was served as blank control.

Cytometric bead array standard curve of MP50155-1, Ezrin Monoclonal Matched Antibody Pair, PBS Only. Capture antibody: 68789-1-PBS. Detection antibody: 68789-2-PBS. Standard:SY02111P. Range: 0.195-25 ng/mL