

For Research Use Only

# LIG3 Monoclonal antibody, PBS Only (Capture)

Catalog Number: 68810-1-PBS



## Basic Information

<b>Catalog Number:</b> 68810-1-PBS	<b>GenBank Accession Number:</b> BC068005	<b>Purification Method:</b> Protein G purification
<b>Size:</b> 1 mg/ml	<b>GeneID (NCBI):</b> 3980	<b>CloneNo.:</b> 1B10B3
<b>Source:</b> Mouse	<b>UNIPROT ID:</b> P49916	
<b>Isotype:</b> IgG1	<b>Full Name:</b> ligase III, DNA, ATP-dependent	
<b>Immunogen Catalog Number:</b> AG31484	<b>Calculated MW:</b> 100-110 kDa	

## Applications

**Tested Applications:**  
WB, Cytometric bead array, Indirect ELISA

**Species Specificity:**  
human, mouse, rat

## Background Information

### Storage

**Storage:**  
Store at -80°C.  
**The product is shipped with ice packs. Upon receipt, store it immediately at -80°C**

**Storage Buffer:**  
PBS Only

For technical support and original validation data for this product please contact:

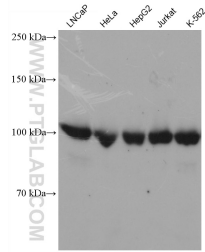
T: 4006900926

E: [Proteintech-CN@ptglab.com](mailto:Proteintech-CN@ptglab.com)

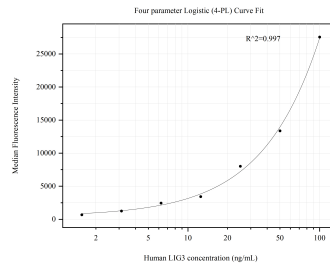
W: [ptgcn.com](http://ptgcn.com)

**This product is exclusively available under Proteintech Group brand and is not available to purchase from any other manufacturer.**

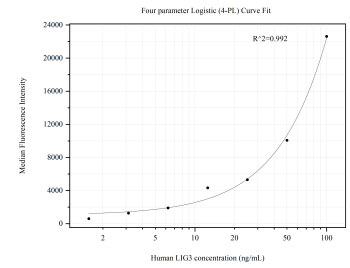
## Selected Validation Data



Various lysates were subjected to SDS PAGE followed by western blot with 68810-1-Ig (LIG3 antibody) at dilution of 1:5000 incubated at room temperature for 1.5 hours. This data was developed using the same antibody clone with 68810-1-PBS in a different storage buffer formulation.



Cytometric bead array standard curve of MP50683-2, LIG3 Monoclonal Matched Antibody Pair, PBS Only. Capture antibody: 68810-1-PBS. Detection antibody: 68810-3-PBS. Standard: Ag31484. Range: 1.563-100 ng/mL



Cytometric bead array standard curve of MP50683-3, LIG3 Monoclonal Matched Antibody Pair, PBS Only. Capture antibody: 68810-1-PBS. Detection antibody: 68810-2-PBS. Standard: Ag31484. Range: 1.563-100 ng/mL