

For Research Use Only

# CLCC1 Monoclonal antibody, PBS Only

Catalog Number: 68853-7-PBS



## Basic Information

<b>Catalog Number:</b> 68853-7-PBS	<b>GenBank Accession Number:</b> BC002939	<b>Purification Method:</b> Protein A purification
<b>Size:</b> 1 mg/ml	<b>GeneID (NCBI):</b> 23155	<b>CloneNo.:</b> 3C4B4
<b>Source:</b> Mouse	<b>UNIPROT ID:</b> Q96S66	
<b>Isotype:</b> IgG1	<b>Full Name:</b> chloride channel CLIC-like 1	
<b>Immunogen Catalog Number:</b> AG24682	<b>Calculated MW:</b> 551 aa, 62 kDa	
	<b>Observed MW:</b> 50-60 kDa	

## Applications

**Tested Applications:**  
WB, Indirect ELISA

**Species Specificity:**  
human

## Background Information

CLCC1, also known as MCLC, is a transmembrane protein that localizes to intracellular compartments, including endoplasmic reticulum (ER), and it functions as a chloride channel (PMID: 11279057). It has been shown that loss of CLCC1 results in ER Stress, misfolded protein accumulation, and neurodegeneration (PMID: 25698737). CLCC1 forms homomultimer in the ER membrane and is a pore-forming component of an anion channel. Studies found that disruption of ER ion homeostasis maintained by CLCC1 is one of the causes of neurodegenerative diseases, such as ALS (amyotrophic lateral sclerosis) (PMID: 37142673).

## Storage

**Storage:**  
Store at -80°C.  
**The product is shipped with ice packs. Upon receipt, store it immediately at -80°C**

**Storage Buffer:**  
PBS Only

For technical support and original validation data for this product please contact:

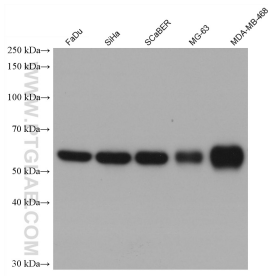
T: 4006900926

E: [Proteintech-CN@ptglab.com](mailto:Proteintech-CN@ptglab.com)

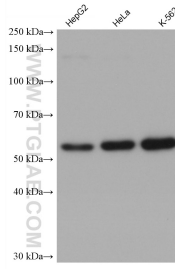
W: [ptgcn.com](http://ptgcn.com)

**This product is exclusively available under Proteintech Group brand and is not available to purchase from any other manufacturer.**

## Selected Validation Data



Various lysates were subjected to SDS PAGE followed by western blot with 68853-7-Ig (CLCC1 antibody) at dilution of 1:4000 incubated at room temperature for 1.5 hours. This data was developed using the same antibody clone with 68853-7-PBS in a different storage buffer formulation.



Various lysates were subjected to SDS PAGE followed by western blot with 68853-7-Ig (CLCC1 antibody) at dilution of 1:4000 incubated at room temperature for 1.5 hours. This data was developed using the same antibody clone with 68853-7-PBS in a different storage buffer formulation.