

For Research Use Only

MDH2 Monoclonal antibody

Catalog Number: 68878-1-Ig



Basic Information

Catalog Number:

68878-1-Ig

Size:

1000 µg/ml

Source:

Mouse

Isotype:

IgG2b

Immunogen Catalog Number:

AG7750

GenBank Accession Number:

BC001917

GeneID (NCBI):

4191

UNIPROT ID:

P40926

Full Name:

malate dehydrogenase 2, NAD
(mitochondrial)

Calculated MW:

36 kDa

Observed MW:

33 kDa

Purification Method:

Protein A purification

CloneNo.:

2A9G11

Recommended Dilutions:

WB 1:5000-1:50000

Applications

Tested Applications:

WB, ELISA

Species Specificity:

human

Positive Controls:

WB : LNCaP cells, MCF-7 cells, HeLa cells, HEK-293 cells, HepG2 cells, Jurkat cells, K-562 cells

Background Information

MDH2 encodes the Krebs cycle enzyme mitochondrial malate dehydrogenase, which catalyzes the reversible oxidation of malate to oxaloacetate and plays a role in the malate-aspartate NADH shuttle. Mutations in MDH2 Cause Developmental and epileptic encephalopathy 51 (PMID: 27989324).

Storage

Storage:

Store at -20°C. Stable for one year after shipment.

Storage Buffer:

PBS with 0.02% sodium azide and 50% glycerol pH 7.3.

Aliquoting is unnecessary for -20°C storage

For technical support and original validation data for this product please contact:

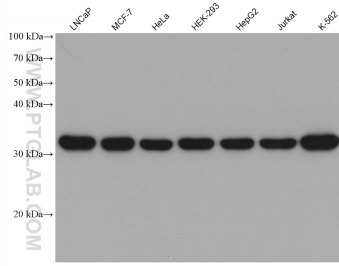
T: 4006900926

E: Proteintech-CN@ptglab.com

W: ptgcn.com

This product is exclusively available under Proteintech Group brand and is not available to purchase from any other manufacturer.

Selected Validation Data



Various lysates were subjected to SDS PAGE followed by western blot with 68878-1-Ig (MDH2 antibody) at dilution of 1:20000 incubated at room temperature for 1.5 hours.