

For Research Use Only

# NCAM1 Monoclonal antibody, PBS Only (Capture)



Catalog Number: 68884-1-PBS

## Basic Information

Catalog Number:

68884-1-PBS

Size:

1 mg/ml

Source:

Mouse

Isotype:

IgG1

GenBank Accession Number:

BC047244

GeneID (NCBI):

4684

ENSEMBL Gene ID:

ENSG00000149294

UNIPROT ID:

P13591

Full Name:

neural cell adhesion molecule 1

Calculated MW:

95 kDa

Purification Method:

Protein G Magarose purification

CloneNo.:

1A7C3

## Applications

Tested Applications:

Cytometric bead array, Indirect ELISA, Sample test

Species Specificity:

human

## Background Information

### Storage

Storage:

Store at -80°C.

The product is shipped with ice packs. Upon receipt, store it immediately at -80°C

Storage Buffer:

PBS Only

For technical support and original validation data for this product please contact:

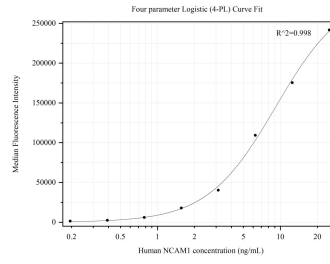
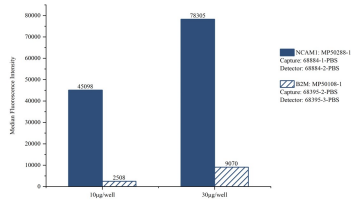
T: 4006900926

E: [Proteintech-CN@ptglab.com](mailto:Proteintech-CN@ptglab.com)

W: [ptgcn.com](http://ptgcn.com)

This product is exclusively available under Proteintech Group brand and is not available to purchase from any other manufacturer.

## Selected Validation Data



Cytometric bead array in SK-N-SH cells lysate using MP50288-1, NCAM1 Monoclonal Matched Antibody Pair, PBS Only. Capture antibody: 68884-1-PBS. Detection antibody: 68884-2-PBS. Non-related target B2M Monoclonal Matched Antibody Pair (MP50108-1) was served as control.

Cytometric bead array standard curve of MP50288-1, NCAM1 Monoclonal Matched Antibody Pair, PBS Only. Capture antibody: 68884-1-PBS. Detection antibody: 68884-2-PBS. Standard: Eg31816. Range: 0.195-25 ng/mL.