

For Research Use Only

CD16 Monoclonal antibody, PBS Only (Detector)

Catalog Number: 68897-2-PBS



Basic Information

Catalog Number:

68897-2-PBS

Size:

1 mg/ml

Source:

Mouse

Isotype:

IgG1

GenBank Accession Number:

BC017865

GeneID (NCBI):

2214

ENSEMBL Gene ID:

ENSG00000203747

UNIPROT ID:

P08637

Full Name:

Fc fragment of IgG, low affinity IIIa,
receptor (CD16a)

Calculated MW:

254 aa, 29 kDa

Purification Method:

Protein G Magarose purification

CloneNo.:

1E11E7

Applications

Tested Applications:

Cytometric bead array, Indirect ELISA

Species Specificity:

human

Background Information

Storage

Storage:

Store at -80°C.

The product is shipped with ice packs. Upon receipt, store it immediately at -80°C

Storage Buffer:

PBS Only

For technical support and original validation data for this product please contact:

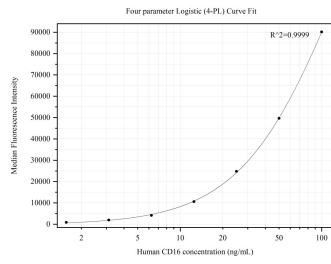
T: 4006900926

E: Proteintech-CN@ptglab.com

W: ptgcn.com

This product is exclusively available under Proteintech Group brand and is not available to purchase from any other manufacturer.

Selected Validation Data



Cytometric bead array standard curve of MP50298-3, CD16 Monoclonal Matched Antibody Pair, PBS Only. Capture antibody: 65090-1-PBS. Detection antibody: 68897-2-PBS. Standard:Eg31662. Range: 1.563-100 ng/mL.